



SERIE 290

SOFT CLOSING HINGE





**CERNIERE PER MOBILI DAL 1956
FURNITURE HINGES SINCE 1956**

Fondata nel 1956, la DANCO nasce dall'esperienza diretta nella produzione di accessori per mobili e minuterie metalliche. Una passione, quella per la ferramenta, che sta alla base della storia della DANCO e dei suoi fondatori, che hanno saputo trasformare un'azienda a carattere familiare, in una società con una posizione di rilievo nel settore della produzione di cerniere per mobili. Ai figli, il merito di averla portata attraverso il dinamismo e la professionalità, in una realtà in grado di confrontarsi ad importanti livelli nazionali ed internazionali.

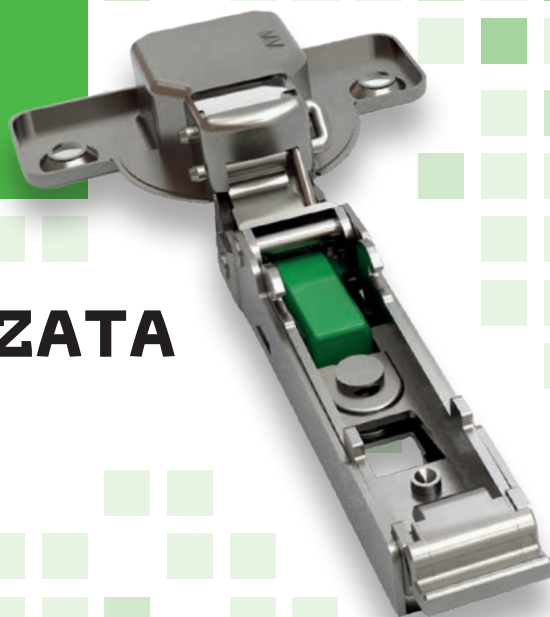
Founded in 1956, DANCO came about from a first-hand experience in the production of furniture accessories and small parts. The passion for iron fittings which drives DANCO and its founders has allowed them to transform a family-run business into a leading company in the production of furniture hinges. Their sons are now taking DANCO even further, working with professionalism and dynamism to ensure the company can meet the challenges of the 21st-century on the national and international arena.

serie 290

FINITURA PERSONALIZZATA CUSTOMIZED FINISHING



L'INNOVAZIONE
PASSA DA DANCO.
INNOVATION
STARTS WITH DANCO.



CHIUSURA AMMORTIZZATA SOFT CLOSING



NUOVA TECNOLOGIA

NEW TECHNOLOGY

NUOVO SISTEMA AMMORTIZZANTE

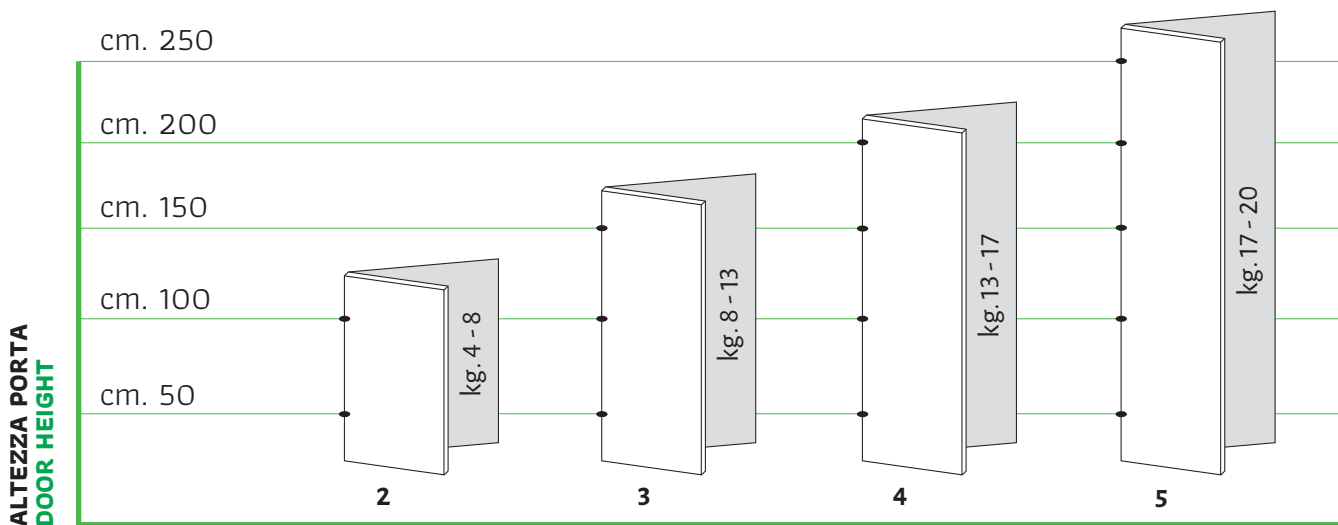
- Tecnologia Ammortizzante con micro-damper nascosto.
- Abbinabile con basette in acciaio a croce e lineare.
- Casse disponibili con interasse forature 48 mm e 45 mm.
- Cerniera fornibile con o senza damper.
- Ampia gamma applicativa.

NEW SOFT DAMPER SYSTEM

- Damping technology with hidden micro-damper.
- Combinable with cruciform or linear steel base plates.
- Available cups with 48 mm or 45 mm drilling pattern.
- Hinge available with or without damper.
- Wide hinge applications available.

NUMERO DI CERNIERE PER PORTA

NUMBER OF HINGES PER DOOR



NUMERO DI CERNIERE PER PORTA
NUMBER OF HINGES PER DOOR

SPAZIO NECESSARIO PER ANTE SENZA INTERFERENZE TRA LORO

NECESSARY SPACE BETWEEN TWO DOORS WITHOUT INTERFERENCE

SERIE 290 Ø 35

	T 16	T 17	T 18	T 19	T 20	T 21	T 22	T 23	T 24	T 25
D3	0,80	1,00	1,30	1,70	2,10	2,60	3,20	3,90	4,70	5,60
D4	0,80	1,00	1,30	1,60	2,00	2,40	3,00	3,60	4,40	5,10
D5	0,70	1,00	1,20	1,50	1,90	2,30	2,80	3,40	4,00	4,80

T = SPESSORE ANTA
DOOR THICKNESS

D = DISTANZA FORO ANTA
DRILLING DISTANCE

L = LUCE FRA ANTA E FIANCO
DISTANCE BETWEEN DOOR AND SIDE

SERIE 290 Ø 40

	T20	T21	T22	T23	T24	T25	T26	T27	T28	T29	T30	T31	T32	T33	T34	T35	L
D3	0,40	0,50	0,60	0,80	1,00	1,20	1,40	1,60	2,30	3,20	4,10	5,10	6,00	7,00	8,00	9,00	0,40
D4	0,40	0,50	0,60	0,80	1,00	1,20	1,40	1,60	1,90	2,60	3,60	4,40	5,40	6,30	7,30	8,20	0,40
D5	0,40	0,50	0,60	0,80	1,00	1,20	1,40	1,60	1,80	2,10	2,90	3,80	4,70	5,70	6,60	7,60	0,40
D6	0,40	0,50	0,60	0,80	1,00	1,20	1,40	1,60	1,80	2,10	2,40	3,30	4,20	5,10	6,00	6,90	0,40
D7	0,40	0,50	0,60	0,80	1,00	1,20	1,40	1,60	1,80	2,10	2,40	2,90	3,70	4,60	5,50	6,40	0,40
D8	0,40	0,50	0,60	0,80	1,00	1,20	1,40	1,60	1,80	2,10	2,30	2,70	3,30	4,10	4,90	5,80	0,40
D9	0,40	0,50	0,60	0,80	1,00	1,20	1,30	1,50	1,70	2,00	2,30	2,60	3,00	3,70	4,50	5,30	0,40
D10	0,40	0,50	0,60	0,80	0,90	1,10	1,30	1,50	1,70	2,00	2,30	2,60	2,90	3,30	4,10	4,80	0,40
D11	0,40	0,50	0,60	0,80	0,90	1,10	1,30	1,50	1,70	2,00	2,20	2,50	2,80	3,20	3,70	4,40	0,40
D12	0,40	0,50	0,60	0,80	0,90	1,10	1,30	1,50	1,70	1,90	2,20	2,40	2,80	3,10	3,50	4,10	0,40

CERNIERE

A CHIUSURA AMMORTIZZATA

SOFT CLOSING
HINGES



CERNIERE A CHIUSURA AMMORTIZZATA

apertura 105°

SOFT CLOSING HINGES

opening 105°

FORO ANTA (D)
DISTANCE
IN THE DOOR (D)

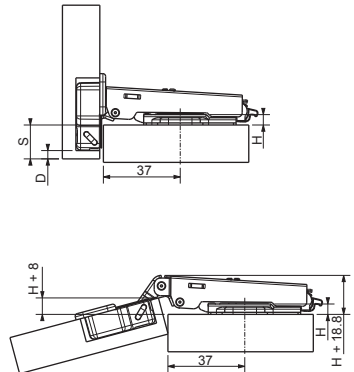
	3	4	5	6	7
0	16	17	18	19	20
2	14	15	16	17	18
4	12	13	14	15	16

SPESSORE BASETTE (H)
THICKNESS OF MOUNTING PLATE (H)

H = 13 + D - S

290 P 4 4

Braccetto in acciaio, collo (P) Piano, con regolazione a camma.
Steel, crank (P) Straight, adjustment by cam.



290 P 4 4 WD disponibile anche senza ammortizzatore
also available without soft damper

FORO ANTA (D)
DISTANCE
IN THE DOOR (D)

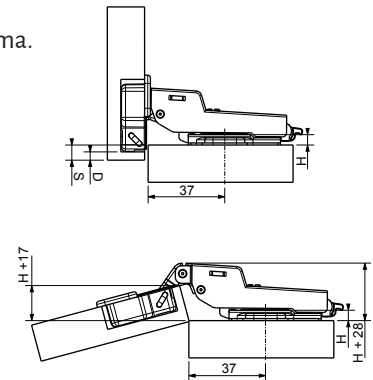
	3	4	5	6	7
0	7	8	9	10	11
2	5	6	7	8	9
4	3	4	5	6	7

SPESSORE BASETTE (H)
THICKNESS OF MOUNTING PLATE (H)

H = 4 + D - S

290 M 4 4

Braccetto in acciaio, collo (M) Medio, con regolazione a camma.
Steel, crank (M) Medium, adjustment by cam.



290 M 4 4 WD disponibile anche senza ammortizzatore
also available without soft damper

FORO ANTA (D)
DISTANCE
IN THE DOOR (D)

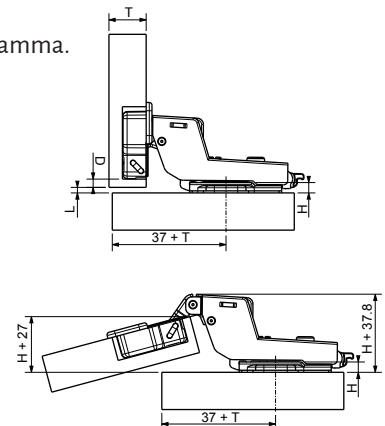
	3	4	5	6	7
0	1.5	0.5	-	-	-
2	3.5	2.5	1.5	0.5	-
4	5.5	4.5	3.5	2.5	1.5

SPESSORE BASETTE (H)
THICKNESS OF MOUNTING PLATE (H)

H = -4.5 + D + L

290 C 4 4

Braccetto in acciaio, collo (C) Collo alto, con regolazione a camma.
Steel, crank (C) Tall, adjustment by cam.



290 C 4 4 WD disponibile anche senza ammortizzatore
also available without soft damper

CERNIERE A CHIUSURA AMMORTIZZATA

apertura 105° per antine con profili in alluminio

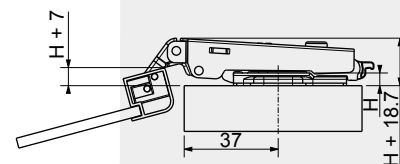
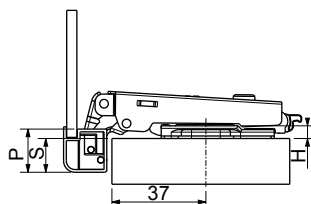
SOFT CLOSING HINGES

opening 105° for doors with aluminium frames



290 PA P 4 4 **cassa per profili di alluminio** **cup for aluminum profiles**

Braccetto in acciaio, collo (P) Piano, con regolazione a camma.
Steel, crank (P) Straight, adjustment by cam.

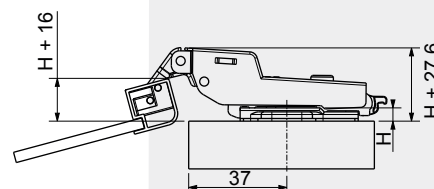
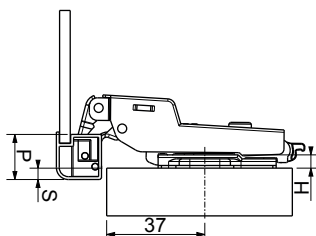
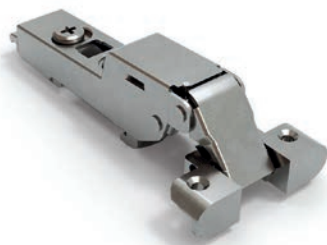


290 PA P 4 4 **WD** disponibile anche senza ammortizzatore also available without soft damper

H = 4+P-S

290 PA M 4 4 **cassa per profili di alluminio** **cup for aluminum profiles**

Braccetto in acciaio, collo (M) Medio, con regolazione a camma.
Steel, crank (M) Medium, adjustment by cam.

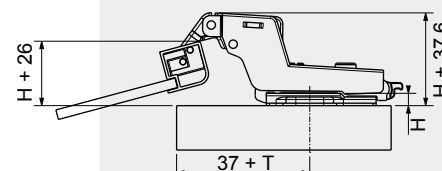
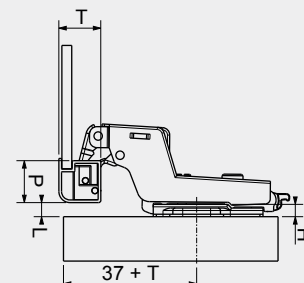
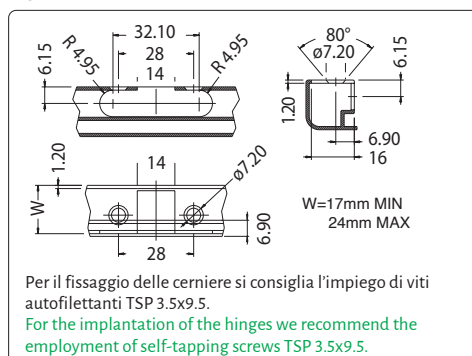


290 PA M 4 4 **WD** disponibile anche senza ammortizzatore also available without soft damper

H = -4+P-S

290 PA C 4 4 **cassa per profili di alluminio** **cup for aluminum profiles**

Braccetto in acciaio, collo (C) Collo alto, con regolazione a camma.
Steel, crank (C) Tall, adjustment by cam.



290 PA C 4 4 **WD** disponibile anche senza ammortizzatore also available without soft damper

H = -15+P+L

CERNIERE A CHIUSURA AUTOMATICA apertura 93° per antine di forte spessore Ø 40

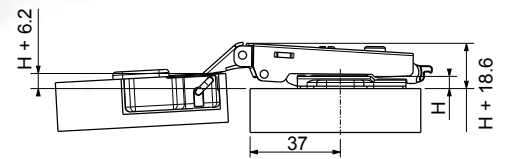
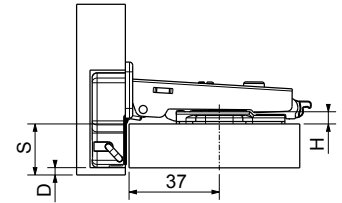
SELF CLOSING HINGES opening 93° for high thickness doors Ø 40

290 P 4 4

Braccetto in acciaio, collo (P) Piano, con regolazione a camma.
Steel, crank (P) Straight, screw by cam.

SPESSORE BASETTA (H) THICKNESS OF MOUNTING PLATE (H)	FORO ANTA (D) DISTANCE IN THE DOOR (D)													
	3	4	5	6	7	8	9	10	11	12	13	14		
4	22	23	24	25	26	27	28	29	30	31	32	33		
5	21	22	23	24	25	26	27	28	29	30	31	32		
6	20	21	22	23	24	25	26	27	28	29	30	31		
7	19	20	21	22	23	24	25	26	27	28	29	30		
8	18	19	20	21	22	23	24	25	26	27	28	29		
9	17	18	19	20	21	22	23	24	25	26	27	28		
10	16	17	18	19	20	21	22	23	24	25	26	27		

$$H = 23 + D - S$$

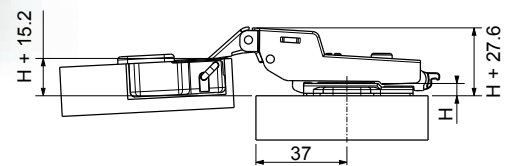
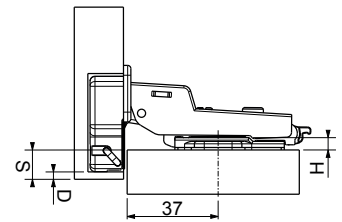


290 M 4 4

Braccetto in acciaio, collo (M) Medio, con regolazione a camma.
Steel, crank (M) Medium, screw by cam.

SPESSORE BASETTA (H) THICKNESS OF MOUNTING PLATE (H)	FORO ANTA (D) DISTANCE IN THE DOOR (D)													
	3	4	5	6	7	8	9	10	11	12	13	14		
4	14	15	16	17	18	19	20	21	22	23	24	25		
5	13	14	15	16	17	18	19	20	21	22	23	24		
6	12	13	14	15	16	17	18	19	20	21	22	23		
7	11	12	13	14	15	16	17	18	19	20	21	22		
8	10	11	12	13	14	15	16	17	18	19	20	21		
9	9	10	11	12	13	14	15	16	17	18	19	20		
10	8	9	10	11	12	13	14	15	16	17	18	19		

$$H = 15 + D - S$$

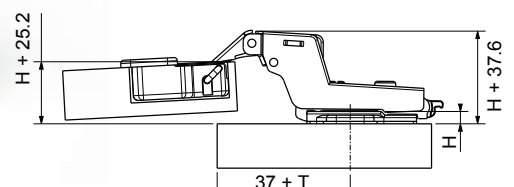
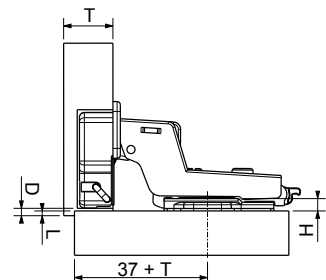


290 C 4 4

Braccetto in acciaio, collo (C) Collo alto,
con regolazione a camma.
Steel, crank (C) Tall, screw by cam.

SPESSORE BASETTA (H) THICKNESS OF MOUNTING PLATE (H)	FORO ANTA (D) DISTANCE IN THE DOOR (D)													
	3	4	5	6	7	8	9	10	11	12	13	14		
4	5	6	7	8	9	10	11	12	13	14	15	16		
5	4	5	6	7	8	9	10	11	12	13	14	15		
6	3	4	5	6	7	8	9	10	11	12	13	14		
7	2	3	4	5	6	7	8	9	10	11	12	13		
8	1	2	3	4	5	6	7	8	9	10	11	12		
9	0	1	2	3	4	5	6	7	8	9	10	11		
10	0	1	2	3	4	5	6	7	8	9	10	11		

$$H = 6 + D + S$$



CERNIERE A CHIUSURA AMMORTIZZATA

apertura 90° per angoli 45°

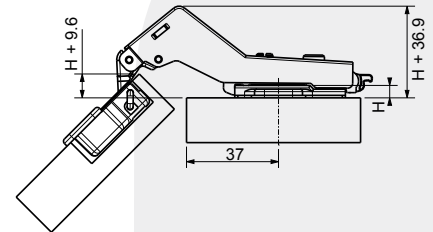
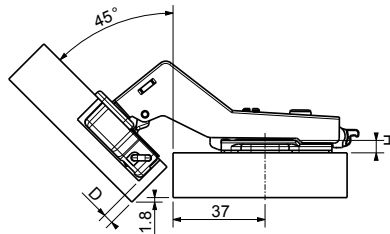
SOFT CLOSING HINGES

opening 90° for corners 45°



291 **C** **4** **4**

Braccetto in zama, collo (C) Collo alto, con regolazione a camma.
Zamak, crank (C) Tall, adjustment by cam.



CERNIERE A CHIUSURA AMMORTIZZATA

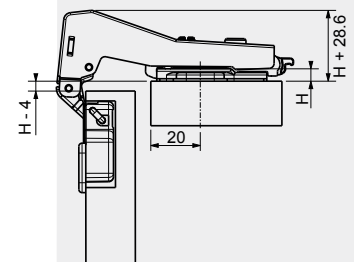
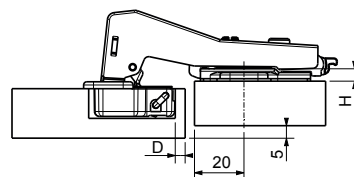
apertura 90° per montanti

SOFT CLOSING HINGES

opening 90° for blind corners

292 **L** **4** **4**

Per fissaggio su montante, foratura modulo 37x32 mm; tipo (L), con regolazione a camma.
To fix on the blind corners, drill for modulus 37x32 mm; type (L), adjustment by cam.



CERNIERE A CHIUSURA AMMORTIZZATA

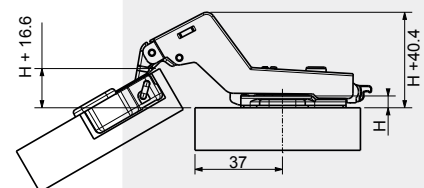
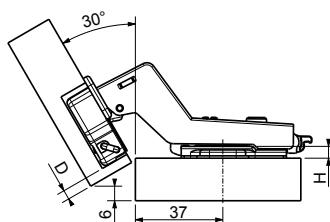
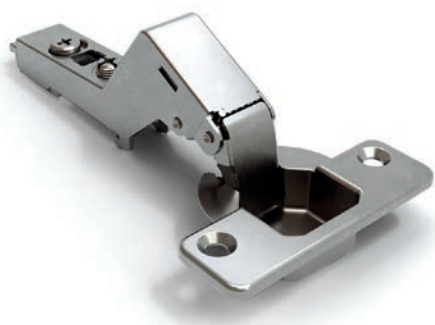
apertura 90° per angoli 30°

SOFT CLOSING HINGES

opening 90° for corners 30°

293 **C** **4** **4**

Braccetto in zama, collo (C) Collo alto, con regolazione a camma.
Zamak, crank (C) Tall, adjustment by cam.



CERNIERE A CHIUSURA AMMORTIZZATA

apertura 165°

SOFT CLOSING HINGES

opening 165°

FORO ANTA (D)
DISTANCE
IN THE DOOR (D)

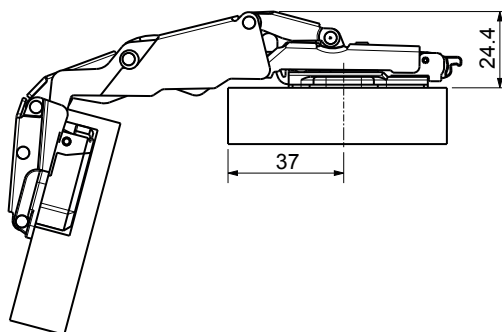
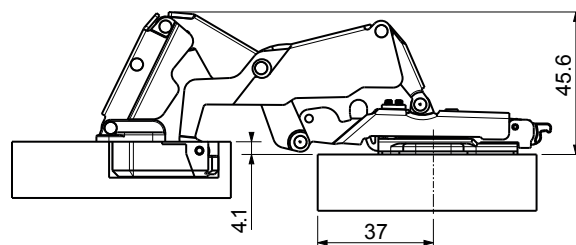
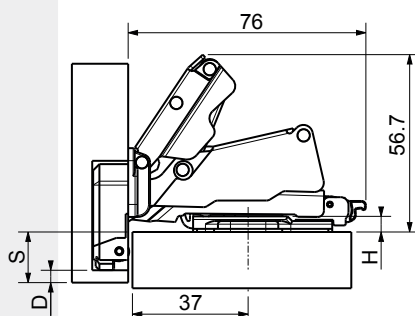
	3	4	5	6	7
0	16	17	18	19	20
2	14	15	16	17	18
4	12	13	14	15	16

SPESSORE BASETTA (H)
THICKNESS OF MOUNTING PLATE (H)

H = 16 + D - S

214 **P** **4** **4**

Braccetto in acciaio, collo (P) Piano.
Steel, crank (P) Straight.



214 **P** **4** **4** **WD** disponibile anche senza ammortizzatore
also available without soft damper

CASSE

CUPS

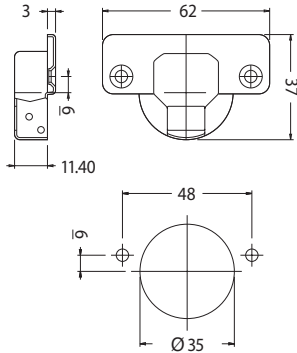


CASSE DISPONIBILI
apertura 110° Ø 35

AVAILABLE CUPS
opening 110° Ø 35

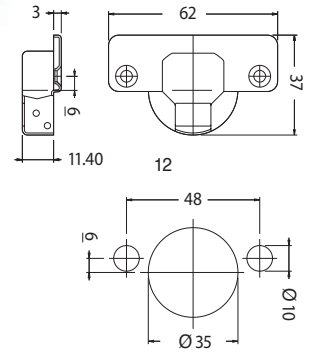
MM

Cassa in acciaio; fissaggio a viti autofilettanti (escluse dalla fornitura).
Steel cup; self-cutting screws fastener (not included in supply).



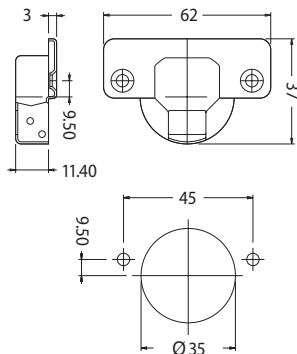
MC

Cassa in acciaio; fissaggio a pressione (bussole Ø 10 mm).
Steel cup; pressurized fastener (Ø 10 mm dowels).



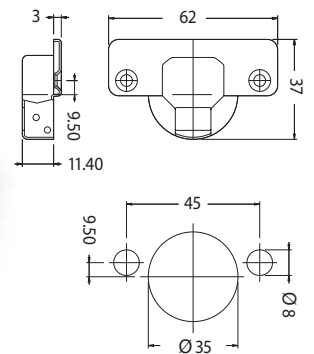
NN

Cassa in acciaio; fissaggio a viti autofilettanti (escluse dalla fornitura).
Steel cup; self-cutting screws fastener (not included in supply).



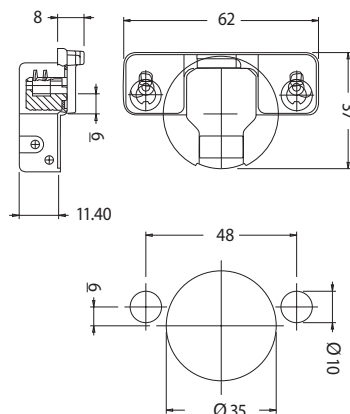
NC

Cassa in acciaio; fissaggio a pressione (bussole Ø 8 mm).
Steel cup; pressurized fastener (Ø 8 mm dowels).

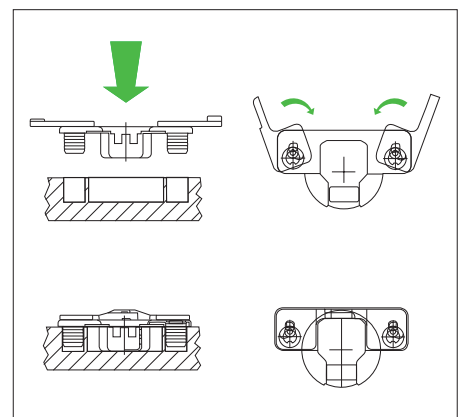


TC

Cassa in acciaio; fissaggio a camma senza utensili.
Steel cup; fixing by cam screws without tools.



DISEGNO B DRAWING B



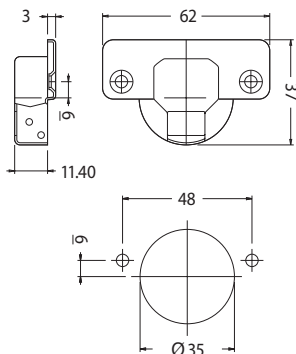
CASSE DISPONIBILI
apertura 110° Ø 35

AVAILABLE CUPS
opening 110° Ø 35



VE

Cassa in acciaio con viti Euro premontate.
Steel cup with pre-mounted Euro screws.

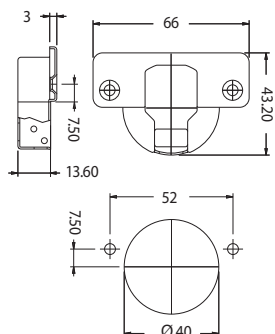


CASSE DISPONIBILI
apertura 93° Ø 40

AVAILABLE CUPS
opening 93° Ø 40

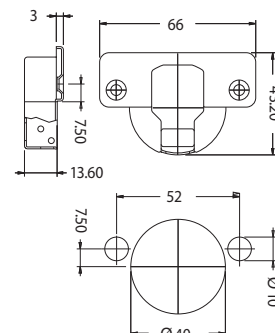
FS

Cassa in acciaio; fissaggio a viti autofilettanti
(escluse dalla fornitura).
Steel cup; self-cutting screws fastener (not included in supply).



FC

Cassa in acciaio; fissaggio a pressione (bussole Ø 10 mm).
Steel cup; pressurized fastener (Ø 10 mm. dowels).

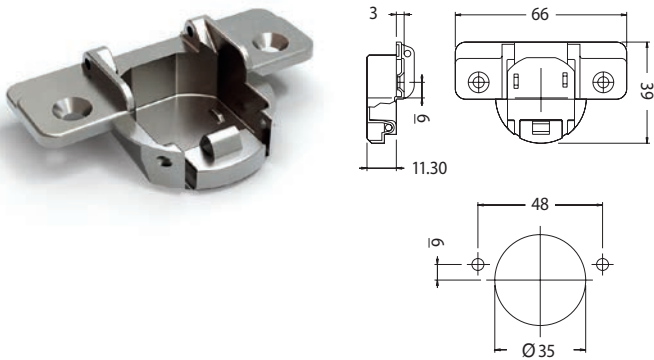


CASSE DISPONIBILI
 apertura 165° Ø 35

AVAILABLE CUPS
 opening 165° Ø 35

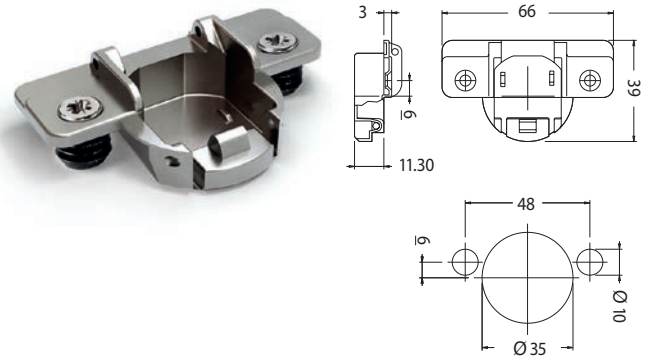
01

Cassa in zama; fissaggio a viti autofilettanti (escluse dalla fornitura).
 Zamak cup; self-cutting screws fastener (not included in supply).



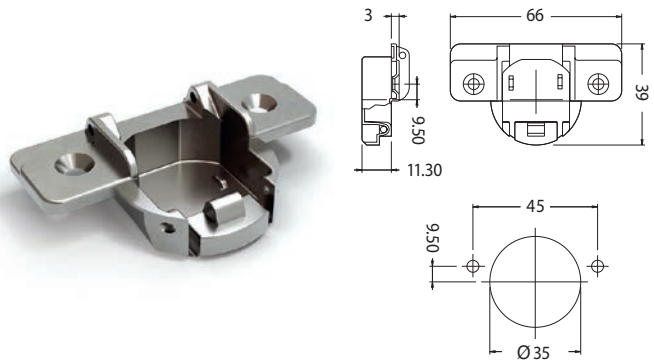
03

Cassa in zama; fissaggio a pressione (bussole Ø 10 mm).
 Zamak cup; pressurized fastener (Ø 10 mm dowels).



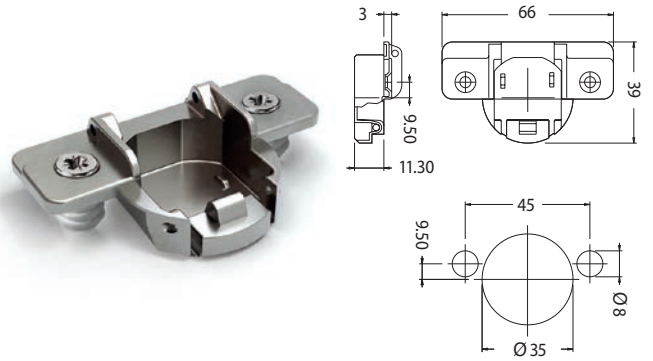
04

Cassa in zama; fissaggio a viti autofilettanti (escluse dalla fornitura).
 Zamak cup; self-cutting screws fastener (not included in supply).

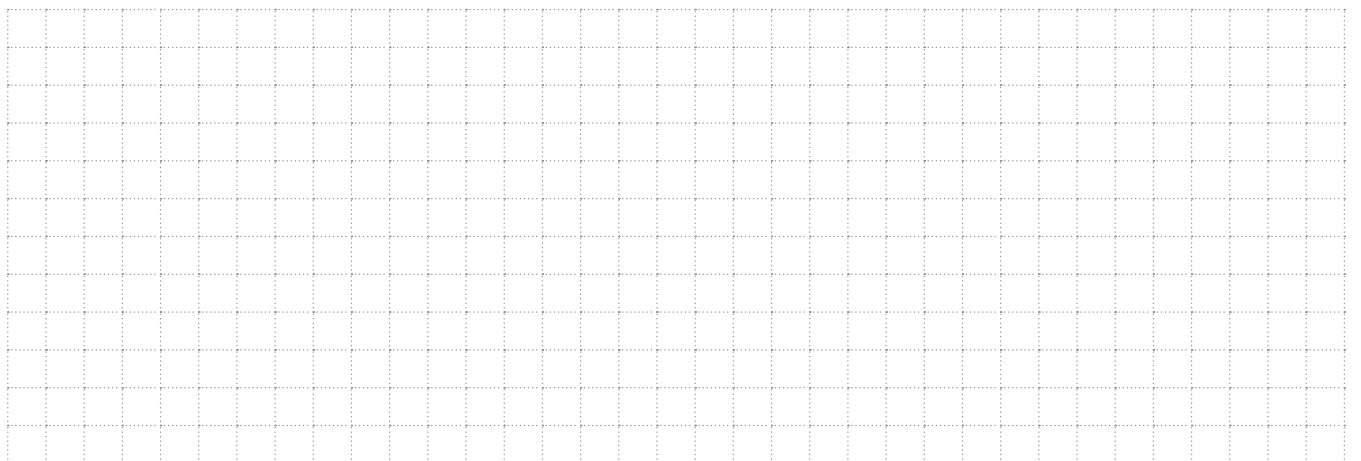


05

Cassa in zama; fissaggio a pressione (bussole Ø 8 mm).
 Zamak cup; pressurized fastener (Ø 8 mm dowels).



NOTE
NOTES



BASETTE

MOUNTING PLATES



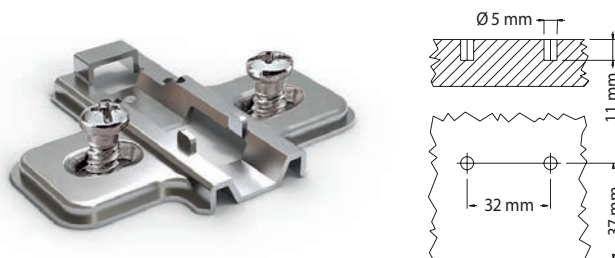
B 212 AR spessore mm **0 2 4**
thickness mm

Basetta in acciaio; regolazione verticale manuale;
interasse 37x32.
Steel mounting plate; manual vertical adjustment;
37x32 pattern.



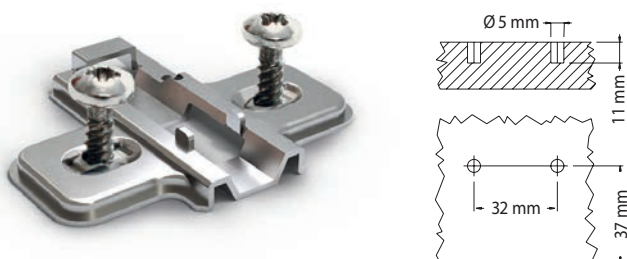
B 212 ERL spessore mm **0 2 4**
thickness mm

Basetta in acciaio; fissaggio a viti Euro premontate 6,3x14;
regolazione verticale manuale; interasse 37x32.
Steel mounting plate; with 6,3x14 pre-mounted Euro screws;
manual vertical adjustment; 37x32 pattern.



B 212 P5 spessore mm **0**
thickness mm

Basetta in acciaio; fissaggio tramite bussole ad espansione \varnothing 5 mm;
regolazione verticale manuale; interasse 37x32.
Steel mounting plate; with \varnothing 5 mm expanding dowels;
manual vertical adjustment; 37x32 pattern.



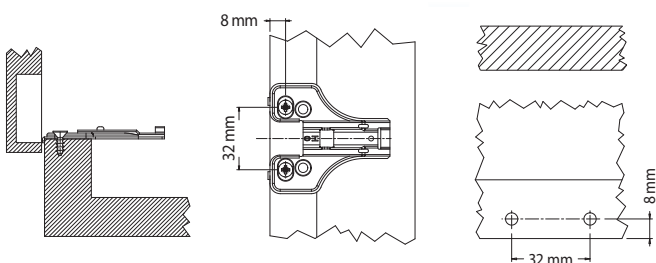
B 212 P10 spessore mm **0**
thickness mm

Basetta in acciaio; fissaggio a pressione (bussole \varnothing 10 mm);
regolazione verticale manuale; interasse 37x32.
Steel mounting plate; with \varnothing 10 mm knock-in dowels;
manual vertical adjustment; 37x32 pattern.



B 212 DLAR spessore mm **0**
thickness mm

Basetta in acciaio;
regolazione verticale manuale;
per applicazioni con cornice;
interasse 12x32.
Steel mounting plate;
manual vertical adjustment;
for face-frame applications;
12x32 pattern.



B 212 PO/04 spessore mm **0**
thickness mm

Basetta in acciaio; regolazione verticale manuale; a 4 fori;
interasse 37+15x32.
Steel mounting plate; manual vertical adjustment; 4 holes;
37+15x32 pattern.



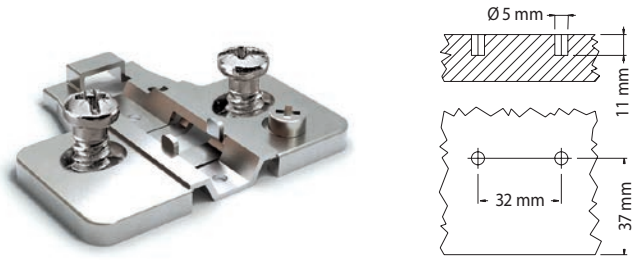
B 212 PA spessore mm **0 2 4**
thickness mm

Basetta in acciaio; regolazione verticale tramite camma; interasse 37x32.
Steel mounting plate; vertical adjustment by CAM; 37x32 pattern.



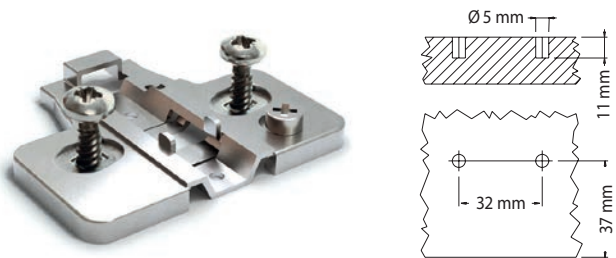
B 212 PA ERL spessore mm **0 2 4**
thickness mm

Basetta in acciaio; fissaggio a viti Euro premontate 6,3x14; regolazione verticale tramite camma; interasse 37x32.
Steel mounting plate; with 6,3x14 pre-mounted Euro screws; vertical adjustment by CAM; 37x32 pattern.



B 212 PA P5 spessore mm **0**
thickness mm

Basetta in acciaio; fissaggio tramite bussole ad espansione $\varnothing 5$ mm; regolazione verticale tramite camma; interasse 37x32.
Steel mounting plate; with $\varnothing 5$ mm expanding dowels; vertical adjustment by CAM; 37x32 pattern.

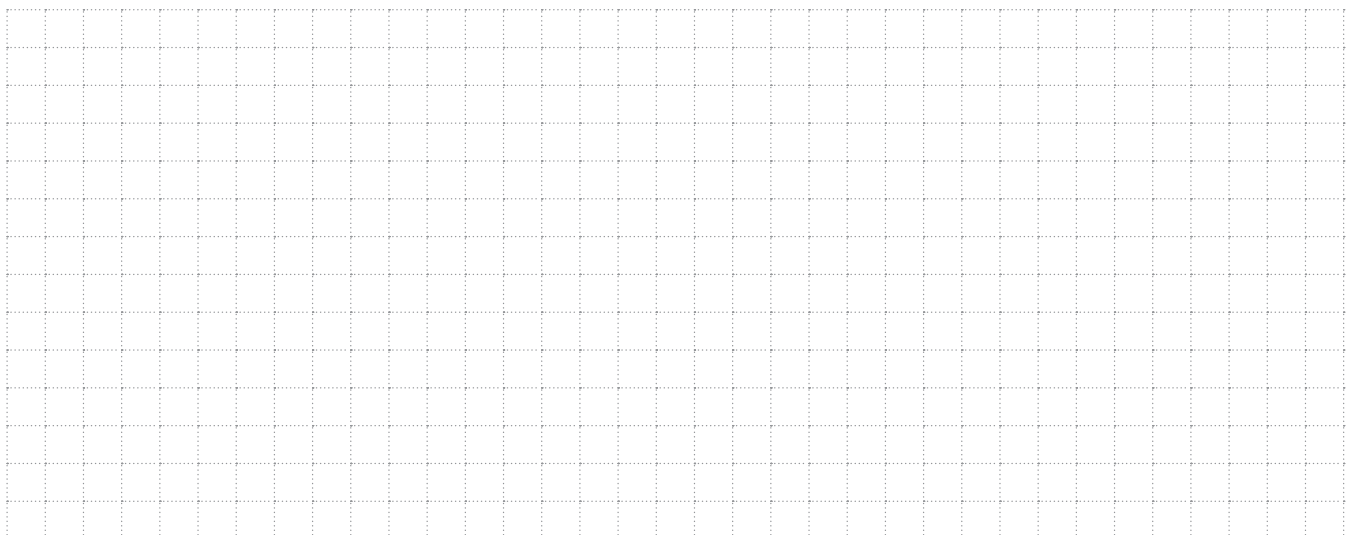


B 212 PA P10 spessore mm **0**
thickness mm

Basetta in acciaio; fissaggio a pressione (bussole $\varnothing 10$ mm); regolazione verticale tramite camma; interasse 37x32.
Steel mounting plate; with $\varnothing 10$ mm knock-in dowels; vertical adjustment by CAM; 37x32 pattern.



NOTE
NOTES




4 4

Finitura base Nichel.
 Basic finishing Nickel plated.


1 1

Finitura base Nichel galvanico.
 Basic finishing galvanic Nickel.



POSSIBILITÀ DI VERNICIATURA

- Tutte le cerniere possono essere verniciate.
- Personalizzazione dei colori.
- Ampia gamma di colori tra cui scegliere, oppure potete proporre il colore che più vi piace!

ORDINE MINIMO: 100 PEZZI

CHANCE OF VARNISHING

- All hinges can be painted.
- Color customization.
- Wide range of colors to choose or you can propose the color you prefer!

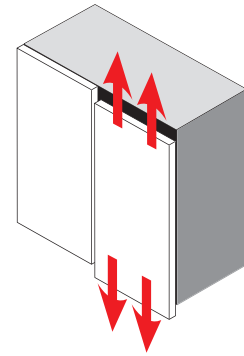
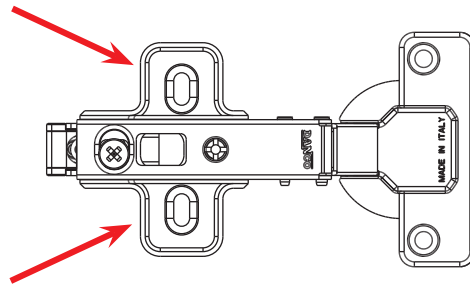
MINIMUM ORDER: 100 PIECES



SISTEMI DI REGOLAZIONE

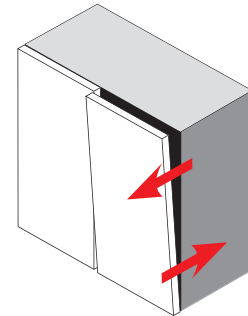
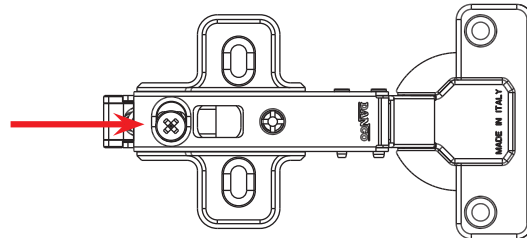
ADJUSTMENT SYSTEMS

REGOLAZIONE VERTICALE VERTICAL ADJUSTMENT



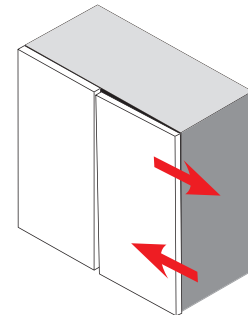
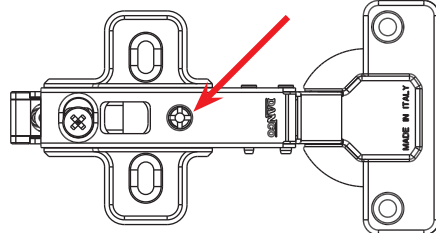
+/- 2 mm

REGOLAZIONE FRONTALE TRAMITE CAMMA FRONTAL ADJUSTMENT BY CAM



- 0/+5 mm

REGOLAZIONE LATERALE DI COPERTURA LATERAL OVERLAY ADJUSTMENT



-1/+5 mm

IMBALLO

PACKING

CONTENUTO CONTENTS

Scatolone
Big box

Scatola
Small box

SERIE 290

250

100

SERIE 291 - 292 - 293

200

100

SERIE 214

100

50

BASETTE - MOUNTING PLATES

1.000

-

Scatolone
Big box

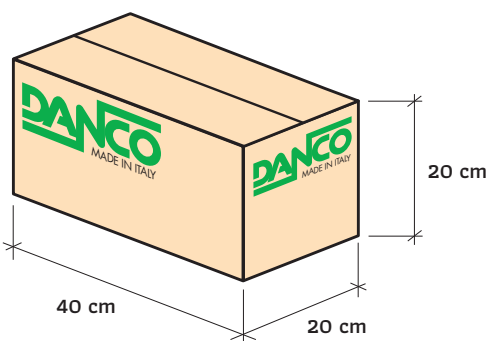


20 cm

40 cm

40 cm

Scatola
Small box



20 cm

40 cm

20 cm

DANCO

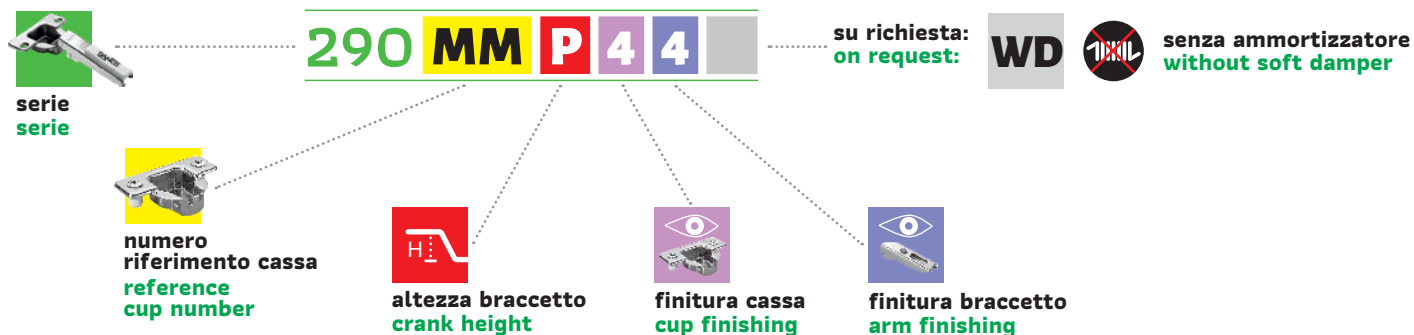
20

ESEMPIO D'ORDINE

EXAMPLE OF ORDER

Per una corretta ordinazione ed un'esatta determinazione del codice seguire le sottoindicate modalità, con la seguente successione:

For a proper order and an exact interpretation of the code, please follow the undermentioned indications in the following order:



ESEMPIO DI ORDINE CERNIERE - ORDERING EXAMPLE OF HINGES

	codice serie serie code	→	290
	numero riferimento cassa reference cup number	→	MM
	altezza braccetto crank height	→	P
	finitura cassa cup finishing	→	4
	finitura braccetto arm finishing	→	4
	senza ammortizzatore without soft damper	→	WD

Ordinare il seguente codice:
Order the following code:

290 MM P 4 4

Si avrà quindi una cerniera con cassa e braccetto in acciaio nichelato, collo piano.
You will therefore have a hinge with steel, nickel plated cup and arm, straight crank.

ESEMPIO DI ORDINE Basette - ORDERING EXAMPLE OF MOUNTING PLATES

	codice basetta mounting plate code	→	B 212 AR
	spessore thickness	→	0
	finitura basetta mounting plate finishing	→	4

Ordinare il seguente codice:
Order the following code:

B 212 AR 0 4

Si avrà quindi una basetta B 212 AR con spessore 0 mm, nichelato.
You will therefore have a mounting plate code B 212 AR, 0 mm thickness, nickel plated.



DANCO spa

20837 VEDUGGIO (MB) - via Volta, 12

Tel. +39 - 0362 998752 r.a.

Fax +39 - 0362 998730 / +39 - 0362 998078

danco@danco.it

www.danco.it