



# SERIE 660

CERNIERE / HINGES





**CERNIERE PER MOBILI DAL 1956**  
**FURNITURE HINGES SINCE 1956**

Fondata nel 1956, la DANCO nasce dall'esperienza diretta nella produzione di accessori per mobili e minuterie metalliche. Una passione, quella per la ferramenta, che sta alla base della storia della DANCO e dei suoi fondatori, che hanno saputo trasformare un'azienda a carattere familiare, in una società con una posizione di rilievo nel settore della produzione di cerniere per mobili. Ai figli, il merito di averla portata attraverso il dinamismo e la professionalità, in una realtà in grado di confrontarsi ad importanti livelli nazionali ed internazionali.

Founded in 1956, DANCO came about from a first-hand experience in the production of furniture accessories and small parts. The passion for iron fittings which drives DANCO and its founders has allowed them to transform a family-run business into a leading company in the production of furniture hinges. Their sons are now taking DANCO even further, working with professionalism and dynamism to ensure the company can meet the challenges of the 21st-century on the national and international arena.

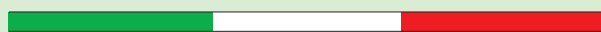
Dal 1956 i nostri prodotti hanno un'anima  
tutta **italiana**.

Since 1956 our products have  
an all-**italian** soul.



[www.danco.it](http://www.danco.it)

**DANCO**<sup>®</sup>  
MADE IN ITALY



# SERIE 660

## INDICE INDEX

---

■ CERNIERE  
■ HINGES



pag. 3  
page 3

---

■ CASSE  
■ CUPS



pag. 7  
page 7

---

■ Basette  
■ MOUNTING PLATES



pag. 9  
page 9

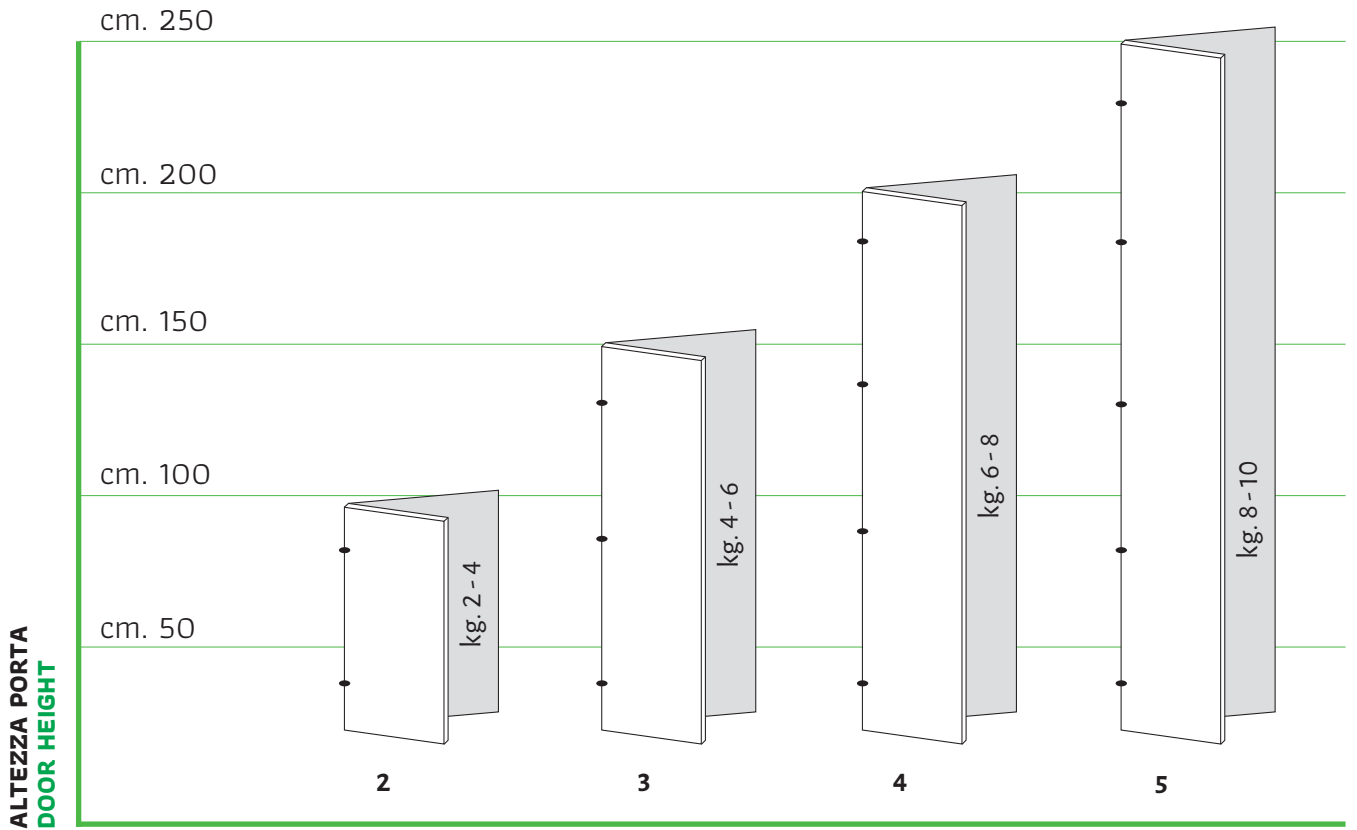
---

■ ESEMPIO D'ORDINE  
■ EXAMPLE OF ORDER

pag. 14  
page 14

## NUMERO DI CERNIERE PER PORTA

## NUMBER OF HINGES PER DOOR



NUMERO DI CERNIERE PER PORTA  
NUMBER OF HINGES PER DOOR

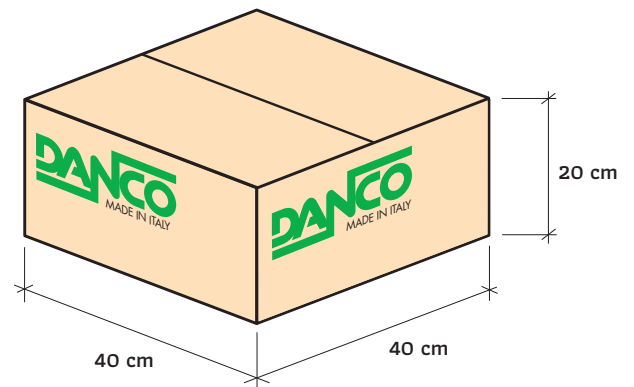
## IMBALLO

## PACKING

### CONTENUTO CONTENTS

### Scatola Box

SERIE 660	500
-----------	-----



# CERNIERE

## HINGES



# CERNIERE A CHIUSURA AUTOMATICA

apertura 90°

# SELF CLOSING HINGES

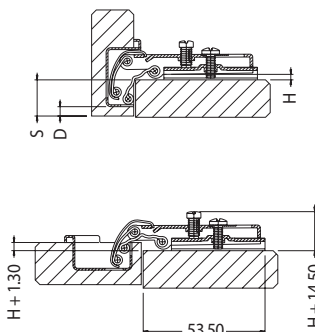
opening 90°

FORO ANTA [D] DISTANCE IN THE DOOR [D]		3	4	5
SPESSORE BASETTA [H] THICKNESS OF MOUNTING PLATE [H]	2	15	16	17
	3	14	15	16
	4	13	14	15
	5	12	13	14
	6	11	12	13
	7	10	11	12
	8	9	10	11
	9	8	9	10
	10	7	8	9

$$H = 14 + D - S$$

## 660 P 4 4

Braccetto in acciaio, collo (P) Piano.  
Steel, crank (P) Straight.

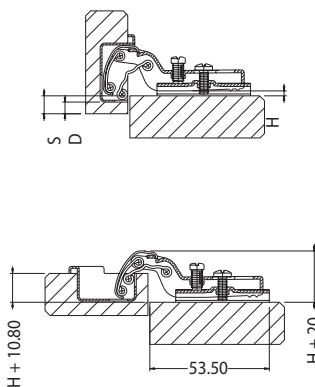


FORO ANTA [D] DISTANCE IN THE DOOR [D]		3	4	5
SPESSORE BASETTA [H] THICKNESS OF MOUNTING PLATE [H]	2	5	6	7
	3	4	5	6
	4	3	4	5
	5	2	3	4
	6	1	2	3
	7	0	1	2
	8	-1 LUCE	0	1
	9	-2 LUCE	-1 LUCE	0
	10			

$$H = 4 + D - S$$

## 660 M 4 4

Braccetto in acciaio, collo (M) Medio.  
Steel, crank (M) Medium.

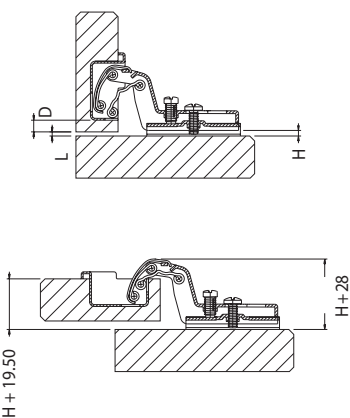


FORO ANTA [D] DISTANCE IN THE DOOR [D]		3	4	5
SPESSORE BASETTA [H] THICKNESS OF MOUNTING PLATE [H]	2	-2 LUCE	-1 LUCE	0
	3			
	4			
	5			
	6			
	7			
	8			
	9			
	10			

$$H = -3 + D + L$$

## 660 C 4 4

Braccetto in acciaio, collo (C) Collo alto.  
Steel, crank (C) Tall.





# CERNIERE A CHIUSURA AUTOMATICA

per cristallo

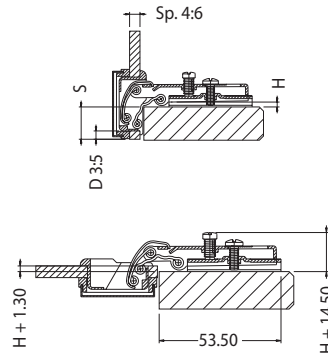
# SELF CLOSING HINGES

glass door



## 660 2F P 1 4

Braccetto in acciaio, collo (P) Piano.  
Steel, crank (P) Straight.



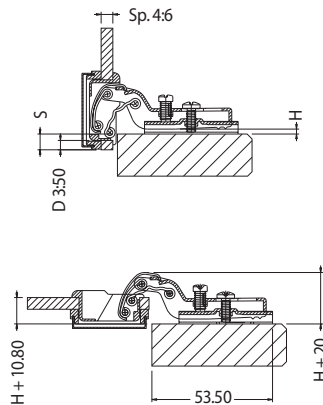
FORO ANTA [D]  
DISTANCE  
IN THE DOOR [D]

SPESSORE BASETTE [H] THICKNESS OF MOUNTING PLATE [H]	FORO ANTA [D] DISTANCE IN THE DOOR [D]		
	3	4	5
2	15	16	17
3	14	15	16
4	13	14	15
5	12	13	14
6	11	12	13
7	10	11	12
8	9	10	11
9	8	9	10
10	7	8	9

**H = 14 + D - S**

## 660 2F M 1 4

Braccetto in acciaio, collo (M) Medio.  
Steel, crank (M) Medium.



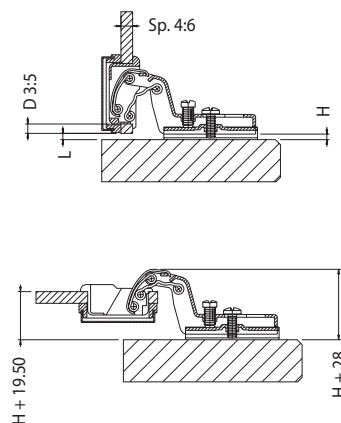
FORO ANTA [D]  
DISTANCE  
IN THE DOOR [D]

SPESSORE BASETTE [H] THICKNESS OF MOUNTING PLATE [H]	FORO ANTA [D] DISTANCE IN THE DOOR [D]			
	3	4	5	
2	5	6	7	
3	4	5	6	
4	3	4	5	
5	2	3	4	
6	1	2	3	
7	0	1	2	
8	-1 LUCE	0	1	
9	-2 LUCE	-1	0	
10				

**H = 4 + D - S**

## 660 2F C 1 4

Braccetto in acciaio, collo (C) Collo alto.  
Steel, crank (C) Tall.

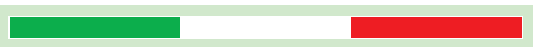


FORO ANTA [D]  
DISTANCE  
IN THE DOOR [D]

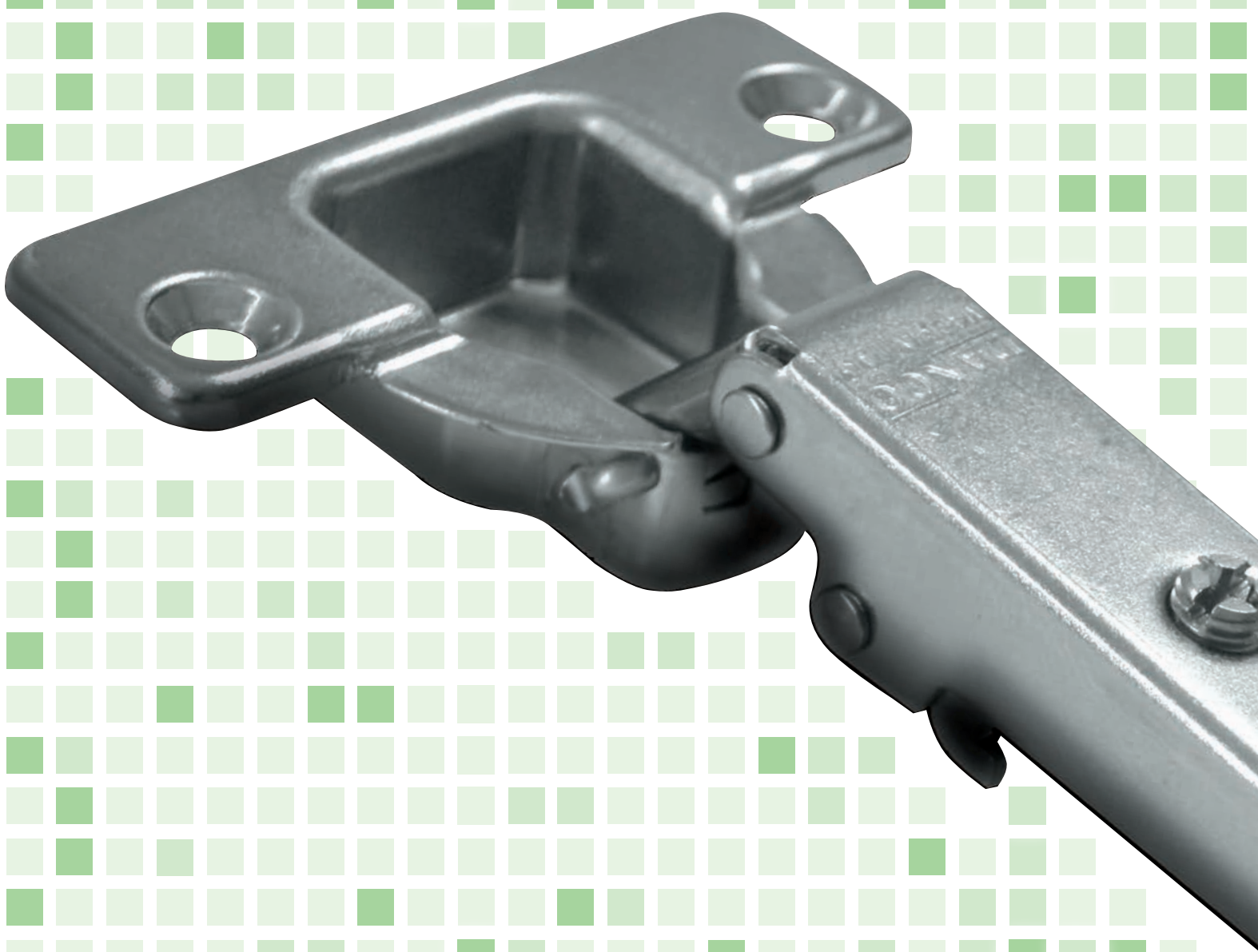
SPESSORE BASETTE [H] THICKNESS OF MOUNTING PLATE [H]	FORO ANTA [D] DISTANCE IN THE DOOR [D]		
	3	4	5
2	-2 LUCE	-1 LUCE	0
3			
4			
5			
6			
7			
8			
9			
10			

**H = -3 + D + L**

Dal 1956 i nostri prodotti hanno un'anima  
tutta **italiana**.



Since 1956 our products have  
an all-**italian** soul.



[www.danco.it](http://www.danco.it)

# CASSE CUPS

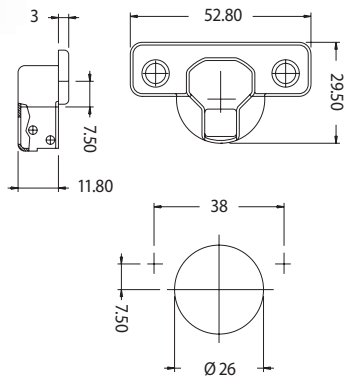


**CASSE DISPONIBILI**  
 apertura 90° Ø 26

**AVAILABLE CUPS**  
 opening 90° Ø 26

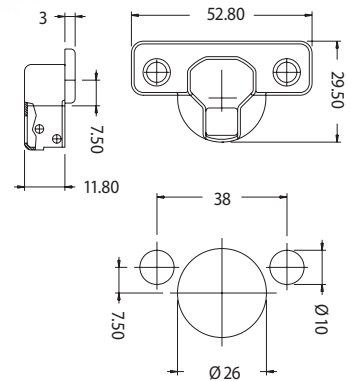
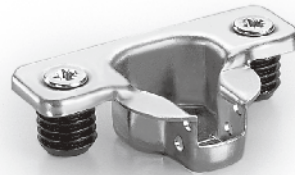
**16**

Cassa in acciaio; fissaggio a viti autofilettanti (escluse dalla fornitura).  
 Steel cup; self-cutting screws fastener (not included in supply).



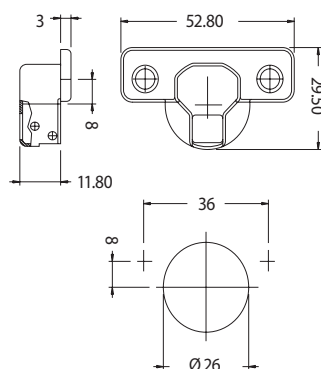
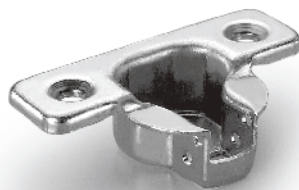
**17**

Cassa in acciaio; fissaggio a pressione (bussole Ø 10 mm).  
 Steel cup; pressurized fastener (Ø 10 mm dowels).



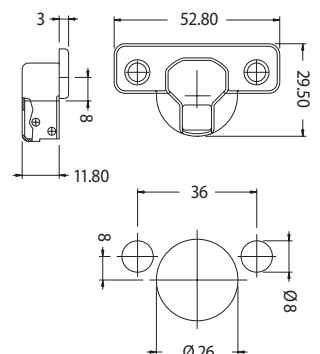
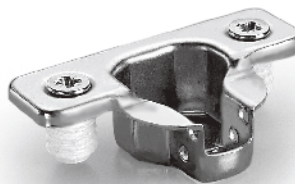
**35**

Cassa in acciaio; fissaggio a viti autofilettanti (escluse dalla fornitura).  
 Steel cup; self-cutting screws fastener (not included in supply).



**36**

Cassa in acciaio; fissaggio a pressione (bussole Ø 8 mm).  
 Steel cup; pressurized fastener (Ø 8 mm. dowels).



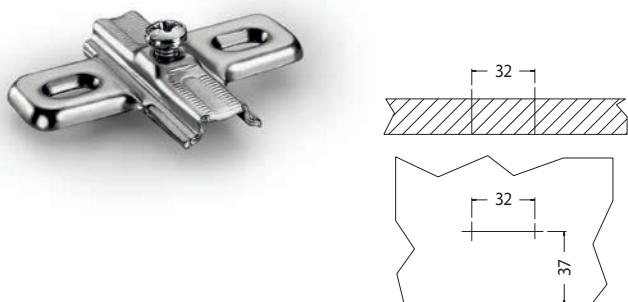
# BASETTE

## MOUNTING PLATES



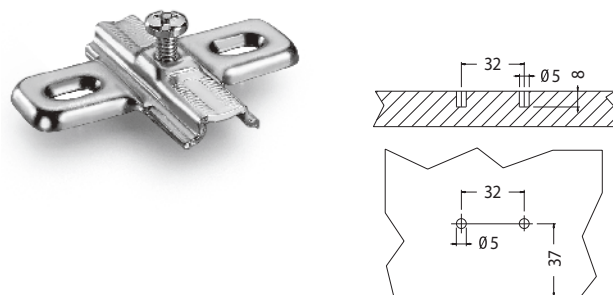
**B 994 AR** spessore mm **2 4**  
thickness mm

Basetta in acciaio; fissaggio a viti autofilettanti (escluse dalla fornitura); regolazione verticale; interasse 32 mm; modulo 37.  
Steel mounting plate; self-cutting screws fastener (not included in supply); vertical adjustment; wheelbase 32 mm; modulus 37.



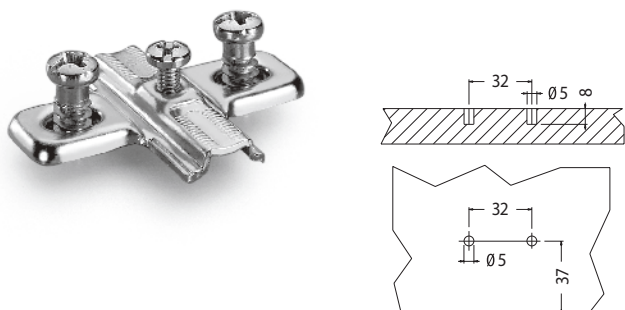
**B 994 ER** spessore mm **2 4**  
thickness mm

Basetta in acciaio; fissaggio a viti Euro (escluse dalla fornitura); regolazione verticale; interasse 32 mm; modulo 37.  
Steel mounting plate; Euro screws fastener (not included in supply); vertical adjustment; wheelbase 32 mm; modulus 37.



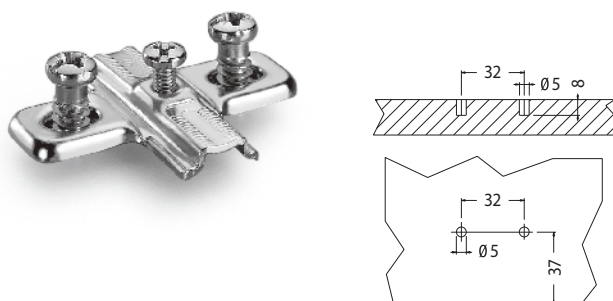
**B 994 ER C** spessore mm **2 4**  
thickness mm

Basetta in acciaio; fissaggio a viti Euro 6,3x10,5; regolazione verticale; interasse 32 mm; modulo 37.  
Steel mounting plate; Euro screws fastener 6,3x10,5; vertical adjustment; wheelbase 32 mm; modulus 37.



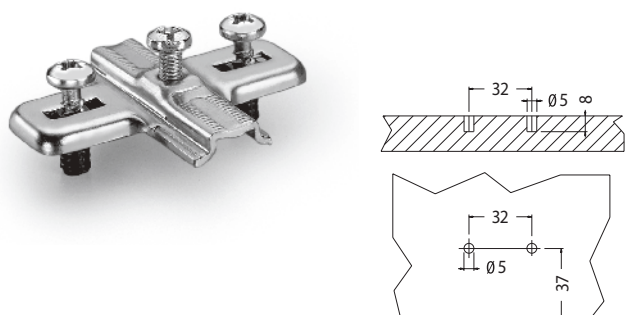
**B 994 ER L** spessore mm **2 4**  
thickness mm

Basetta in acciaio; fissaggio a viti Euro 6,3x14; regolazione verticale; interasse 32 mm; modulo 37.  
Steel mounting plate; Euro screws fastener 6,3x14; vertical adjustment; wheelbase 32 mm; modulus 37.



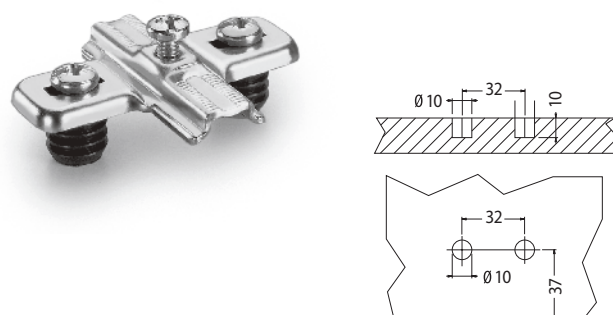
**B 994 P5 I** spessore mm **2 4**  
thickness mm

Basetta in acciaio; fissaggio a bussole  $\varnothing$  5 mm; regolazione verticale; interasse 32 mm; modulo 37.  
Steel mounting plate;  $\varnothing$  5 mm dowels fastener; vertical adjustment; wheelbase 32 mm; modulus 37.



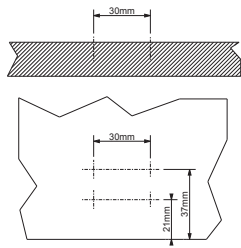
**B 994 P10** spessore mm **2 4**  
thickness mm

Basetta in acciaio; fissaggio a pressione (bussole  $\varnothing$  10 mm); regolazione verticale; interasse 32 mm; modulo 37.  
Steel mounting plate; pressurized fastener ( $\varnothing$  10 mm dowels); vertical adjustment; wheelbase 32 mm; modulus 37.



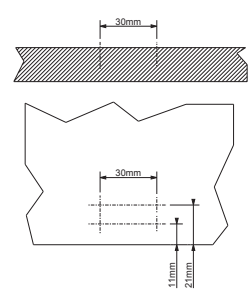
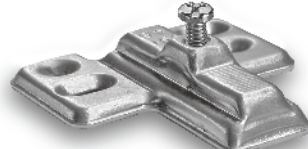
**B 995 AR** spessore mm **3**  
thickness mm **3**

Basetta in acciaio; fissaggio a viti autofilettanti (escluse dalla fornitura); regolabile.  
Steel mounting plate; self-cutting screws fastener (not included in supply); setting.

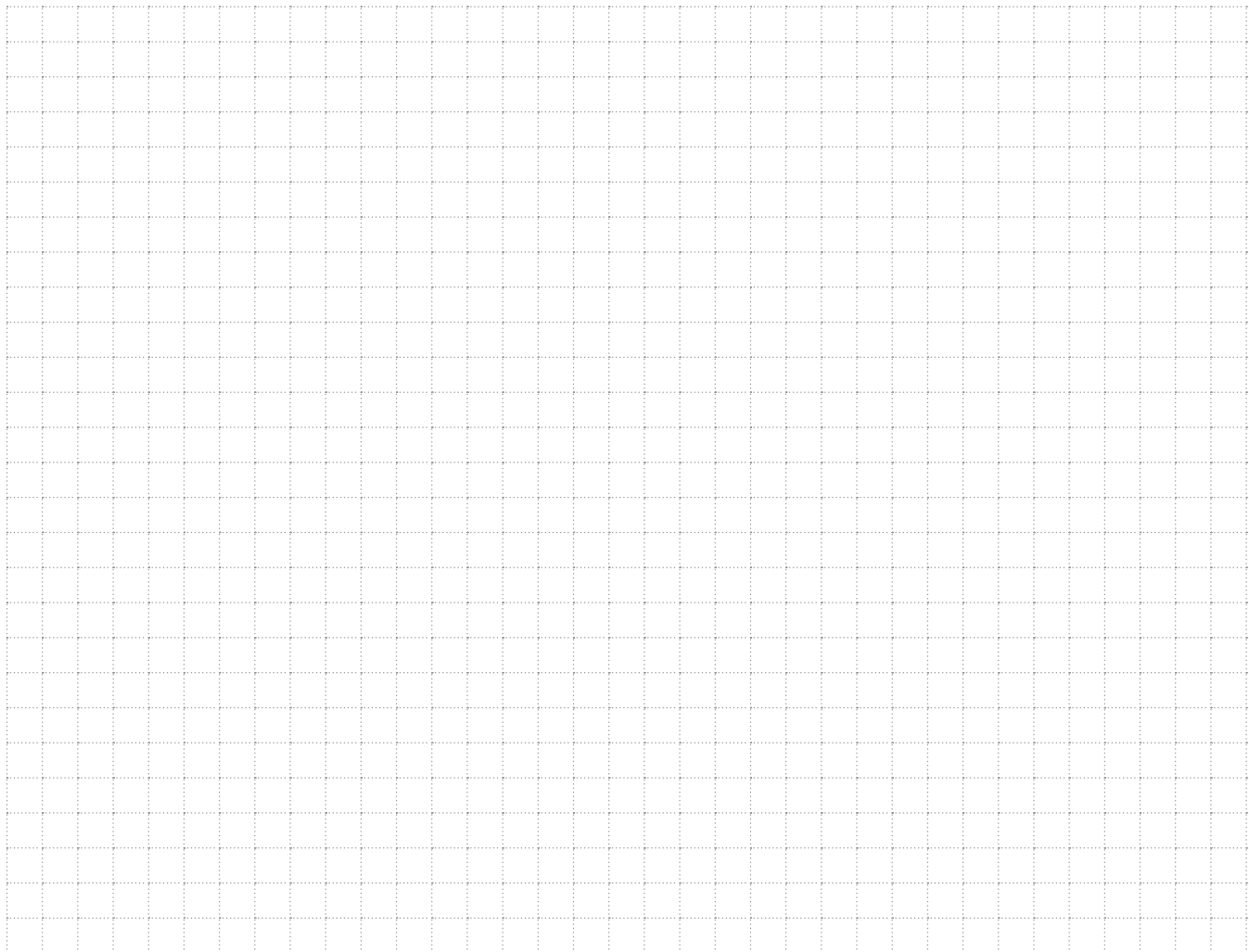


**B 991 AR** spessore mm **4,5**  
thickness mm **4,5**

Basetta in acciaio; fissaggio a viti autofilettanti (escluse dalla fornitura); regolabile.  
Steel mounting plate; self-cutting screws fastener (not included in supply); setting.



**NOTE  
NOTES**

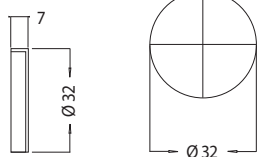
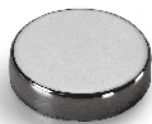


## PIASTRE IN PLASTICA PER CRISTALLO

## PLASTIC PLATES FOR GLASS DOOR HINGES

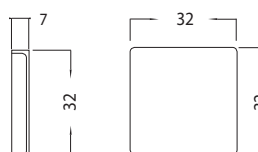
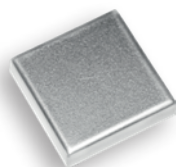
### Z 25

Piastra in nylon.  
Nylon plate.



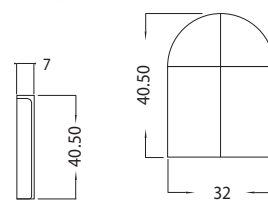
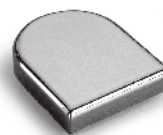
### Z 26

Piastra in nylon.  
Nylon plate.



### Z 27

Piastra in nylon.  
Nylon plate.



#### FINITURE FINISHING

#### Riferimento Reference

Nero <b>Black</b>	1
Marrone <b>Brown</b>	2
Bianco <b>White</b>	3
Cromato spruzzato <b>Chromium lacquered</b>	5 SP

#### FINITURE FINISHING

#### Riferimento Reference

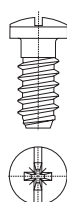
Dorato spruzzato <b>Gold lacquered</b>	10 SP
Cromato opaco spruzzato <b>Matt chromium lacquered</b>	5 OP SP
Dorato opaco spruzzato <b>Matt gold lacquered</b>	10 OP SP

## VITI EURO DISPONIBILI

## AVAILABLE EURO SCREWS

### T 008

Vite Euro  $\varnothing$  6,3x14.  
Euro screw  $\varnothing$  6,3x14.



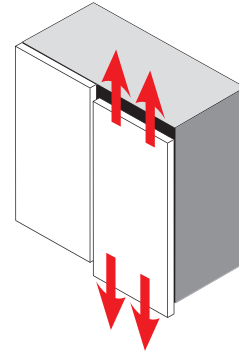
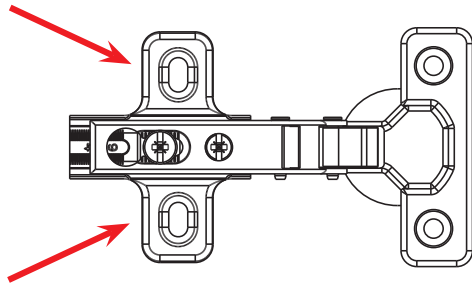
### T 009

Vite Euro  $\varnothing$  6,3x10,5.  
Euro screw  $\varnothing$  6,3x10,5.



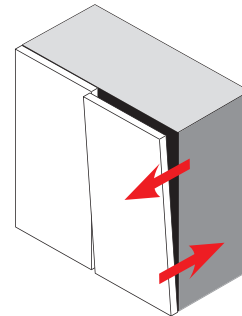
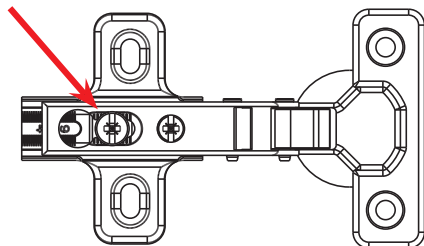


REGOLAZIONE VERTICALE  
VERTICAL ADJUSTMENT



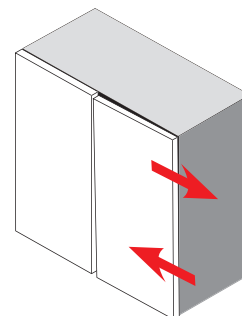
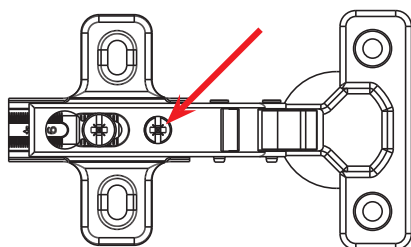
+/- 2 mm

REGOLAZIONE FRONTALE TRAMITE VITE  
FRONTAL ADJUSTMENT BY SCREW



- 0/+5 mm

REGOLAZIONE LATERALE DI COPERTURA  
LATERAL OVERLAY ADJUSTMENT








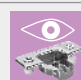
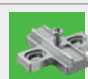
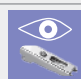


-1/+5 mm


# ESEMPIO D'ORDINE

# EXAMPLE OF ORDER





Le immagini utilizzate in questo esempio d'ordine sono indicative e potrebbero non corrispondere a quelle del presente catalogo.

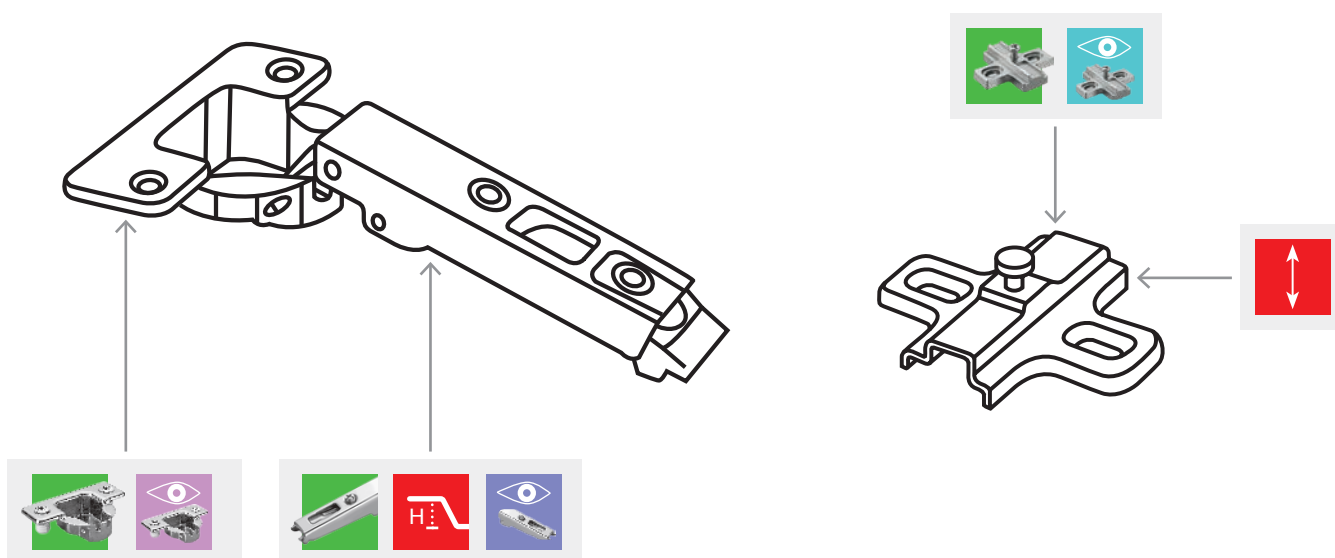
The images used in this example are indicative and may not correspond to those in this catalog.

 <b>serie serie</b>	 <b>spessore basetta in mm mounting plate thickness in mm</b>
 <b>cassa cup</b>	 <b>altezza braccetto crank height</b>
 <b>braccetto arm</b>	 <b>finitura cassa cup finishing</b>
 <b>basetta mounting plate</b>	 <b>finitura braccetto arm finishing</b>
 <b>numero riferimento cassa reference cup number</b>	 <b>finitura basetta mounting plate finishing</b>

 <b>altezza braccetto crank height</b>	<b>P</b> Collo Piano Straight Crank mm 0	<b>C</b> Collo Alto Tall Crank mm 17
	<b>M</b> Collo Medio Medium Crank mm 8	

<b>FINITURA FINISHING</b>	  	<b>4</b>	<b>9</b>
		<b>4</b> Nichelato Nickel plated	<b>9</b> Zincato Galvanized
		<b>4</b>	<b>9</b>

 <b>vite inserita inserted screw</b>	 <b>senza molla without spring</b>	 <b>spinta push</b>	 <b>senza ammortizzatore without soft damper</b>
---	---	--	---



# ESEMPIO D'ORDINE

# EXAMPLE OF ORDER

Per una corretta ordinazione ed un'esatta determinazione del codice seguire le sottoindicate modalità, con la seguente successione:

For a proper order and an exact interpretation of the code, please follow the undermentioned indications in the following order:



serie  
serie

660 16 P 4 4

su richiesta:  
on request:



numero riferimento cassa  
reference cup number



altezza braccetto  
crank height



finitura cassa  
cup finishing



finitura braccetto  
arm finishing

WS



senza molla  
without spring

P



spinta  
push

WD



senza ammortizzatore  
without soft damper

## ESEMPIO DI ORDINE CERNIERE - ORDERING EXAMPLE OF HINGES

	codice serie serie code	→	660
	numero riferimento cassa reference cup number	→	16
	altezza braccetto crank height	→	P
	finitura cassa cup finishing	→	4
	finitura braccetto arm finishing	→	4
	senza molla without spring	→	WS
	spinta push	→	P
	senza ammortizzatore without soft damper	→	WD

Ordinare il seguente codice:  
Order the following code:

660 16 P 4 4

Si avrà quindi una cerniera con cassa e braccetto in acciaio nichelato, collo piano.  
You will therefore have a hinge with steel, nickel plated cup and arm, straight crank.

## ESEMPIO DI ORDINE Basette - ORDERING EXAMPLE OF MOUNTING PLATES

	codice bassetta mounting plate code	→	B 994 AR V
	spessore thickness	→	2
	finitura bassetta mounting plate finishing	→	4
	vite inserita inserted screw	→	V

Ordinare il seguente codice:  
Order the following code:

B 994 AR V 2 4

Si avrà quindi una bassetta B 994 AR V con spessore 2 mm, nichelato.  
You will therefore have a mounting plate code B 994 AR V, 2 mm thickness, nickel plated.



**DANCO spa**

20837 VEDUGGIO (MB) - via Volta, 12

Tel. +39 - 0362 998752 r.a.

Fax +39 - 0362 998730 / +39 - 0362 998078

[danco@danco.it](mailto:danco@danco.it)

[www.danco.it](http://www.danco.it)