



SERIE 780

CERNIERE / HINGES





**CERNIERE PER MOBILI DAL 1956
FURNITURE HINGES SINCE 1956**

Fondata nel 1956, la DANCO nasce dall'esperienza diretta nella produzione di accessori per mobili e minuterie metalliche. Una passione, quella per la ferramenta, che sta alla base della storia della DANCO e dei suoi fondatori, che hanno saputo trasformare un'azienda a carattere familiare, in una società con una posizione di rilievo nel settore della produzione di cerniere per mobili. Ai figli, il merito di averla portata attraverso il dinamismo e la professionalità, in una realtà in grado di confrontarsi ad importanti livelli nazionali ed internazionali.

Founded in 1956, DANCO came about from a first-hand experience in the production of furniture accessories and small parts. The passion for iron fittings which drives DANCO and its founders has allowed them to transform a family-run business into a leading company in the production of furniture hinges. Their sons are now taking DANCO even further, working with professionalism and dynamism to ensure the company can meet the challenges of the 21st-century on the national and international arena.

Dal 1956 i nostri prodotti hanno un'anima
tutta **italiana**.

Since 1956 our products have
an all-**italian** soul.



www.danco.it



SERIE 780

INDICE INDEX

- CERNIERE
- HINGES



pag. 3
page 3

- CASSE
- CUPS



pag. 11
page 11

- BASETTE
- MOUNTING PLATES



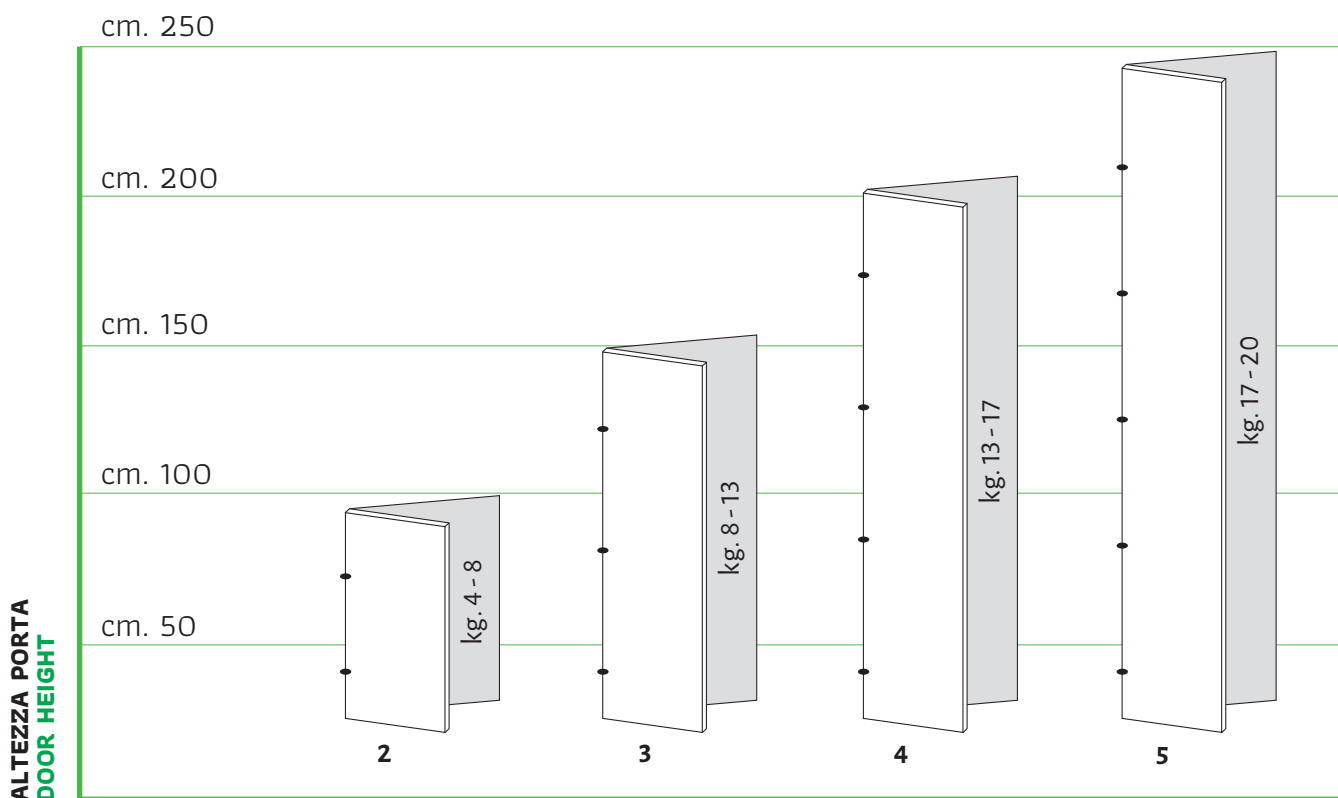
pag. 19
page 19

- ESEMPIO D'ORDINE
- EXAMPLE OF ORDER

pag. 24
page 24

NUMERO DI CERNIERE PER PORTA

NUMBER OF HINGES PER DOOR



NUMERO DI CERNIERE PER PORTA
NUMBER OF HINGES PER DOOR

SPAZIO NECESSARIO PER ANTE SENZA INTERFERENZE TRA LORO

NECESSARY SPACE BETWEEN TWO DOORS WITHOUT INTERFERENCE

SERIE 780 Ø 35

	T 16	T 17	T 18	T 19	T 20	T 21	T 22	T 23	T 24	T 25
D3	0,52	0,72	0,95	1,22	1,53	1,89	2,31	2,84	3,57	4,38
D4	0,50	0,70	0,92	1,18	1,47	1,81	2,21	2,66	3,25	3,97
D5	0,49	0,67	0,89	1,14	1,42	1,75	2,12	2,54	3,05	3,67
D6	0,47	0,65	0,86	1,11	1,38	1,69	2,04	2,44	2,90	3,44
D7	0,46	0,64	0,84	1,07	1,34	1,64	1,97	2,35	2,78	3,27
D8	0,45	0,62	0,82	1,04	1,30	1,59	1,91	2,27	2,68	3,13

T = SPESSORE ANTA
DOOR THICKNESS

D = DISTANZA FORO ANTA
DRILLING DISTANCE

L = LUCE FRA ANTA E FIANCO
DISTANCE BETWEEN DOOR
AND SIDE

CERNIERE

HINGES



CERNIERE A CHIUSURA AUTOMATICA

apertura 90°

SELF CLOSING HINGES

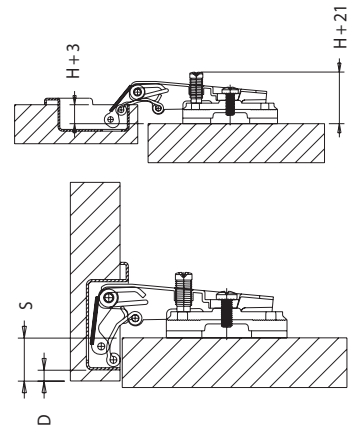
opening 90°

		FORO ANTA (D) DISTANCE IN THE DOOR (D)						
		3	4	5	6	7	8	
SPESSORE BASETTA (H) THICKNESS OF MOUNTING PLATE (H)	2	19	20	21	22	23	24	
	3	18	19	20	21	22	23	
	4	17	18	19	20	21	22	
	5	16	17	18	19	20	21	
	6	15	16	17	18	19	20	
	7	14	15	16	17	18	19	
	8	13	14	15	16	17	18	
	9	12	13	14	15	16	17	
	10	11	12	13	14	15	16	

$$H = 18 + D - S$$

780 P 4 4

Braccetto in acciaio, collo (P) Piano.
Steel, crank (P) Straight.

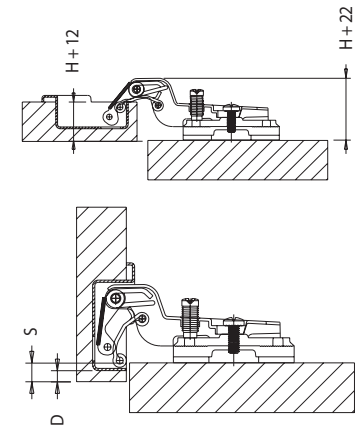


		FORO ANTA (D) DISTANCE IN THE DOOR (D)						
		3	4	5	6	7	8	
SPESSORE BASETTA (H) THICKNESS OF MOUNTING PLATE (H)	2	10	11	12	13	14	15	
	3	9	10	11	12	13	14	
	4	8	9	10	11	12	13	
	5	7	8	9	10	11	12	
	6	6	7	8	9	10	11	
	7	5	6	7	8	9	10	
	8	4	5	6	7	8	9	
	9	3	4	5	6	7	8	
	10	2	3	4	5	6	7	

$$H = 9 + D - S$$

780 M 4 4

Braccetto in acciaio, collo (M) Medio.
Steel, crank (M) Medium.

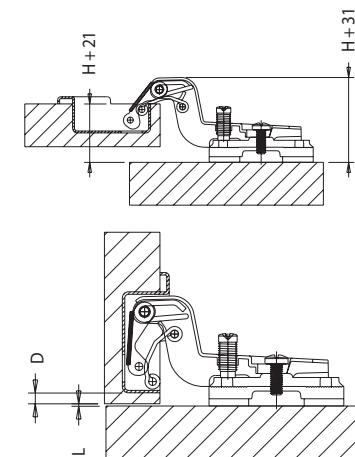


		FORO ANTA (D) DISTANCE IN THE DOOR (D)						
		3	4	5	6	7	8	
SPESSORE BASETTA (H) THICKNESS OF MOUNTING PLATE (H)	2	1	2	3	4	5	6	
	3	0	1	2	3	4	5	
	4	-1 LUCE	0	1	2	3	4	
	5	-1 LUCE	0	1	2	3		
	6	-1 LUCE	0	1	2			
	7	-1 LUCE	0	1				
	8	-1 LUCE	0					
	9	-1 LUCE						
	10	-1 LUCE						

$$H = 0 + D + L$$

780 C 4 4

Braccetto in acciaio, collo (C) Collo alto.
Steel, crank (C) Tall.



CERNIERE A CHIUSURA AUTOMATICA

apertura 110°

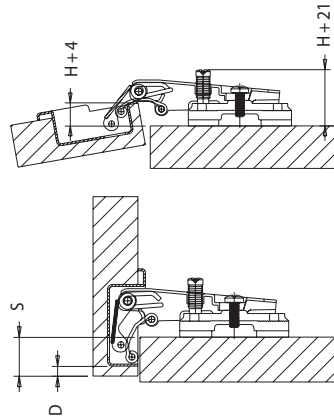
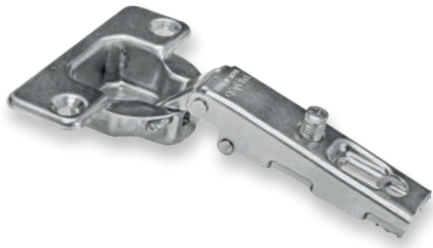
SELF CLOSING HINGES

opening 110°



780 P 4 4

Braccetto in acciaio, collo (P) Piano.
Steel, crank (P) Straight.

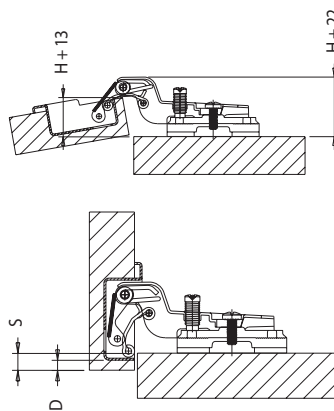


FORO ANTA [D] DISTANCE IN THE DOOR [D]		3	4
SPESSORE BASETTE [H] THICKNESS OF MOUNTING PLATE [H]	2	19	20
	3	18	19
	4	17	18
	5	16	17
	6	15	16
	7	14	15
	8	13	14
	9	12	13
	10	11	12

H = 18 + D - S

780 M 4 4

Braccetto in acciaio, collo (M) Medio.
Steel, crank (M) Medium.

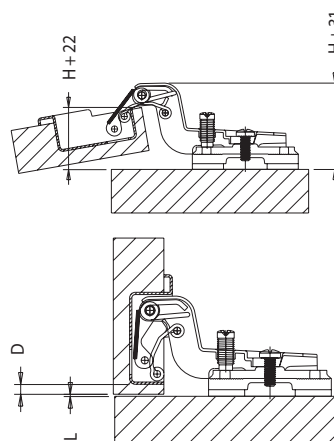


FORO ANTA [D] DISTANCE IN THE DOOR [D]		3	4
SPESSORE BASETTE [H] THICKNESS OF MOUNTING PLATE [H]	2	10	11
	3	9	10
	4	8	9
	5	7	8
	6	6	7
	7	5	6
	8	4	5
	9	3	4
	10	2	3

H = 9 + D - S

780 C 4 4

Braccetto in acciaio, collo (C) Collo alto.
Steel, crank (C) Tall.



FORO ANTA [D] DISTANCE IN THE DOOR [D]		3	4
SPESSORE BASETTE [H] THICKNESS OF MOUNTING PLATE [H]	2	1	2
	3	0	1
	4	-1	0
	5	-1	LUCE
	6		
	7		
	8		
	9		
	10		

H = 0 + D + L

CERNIERE A CHIUSURA AUTOMATICA

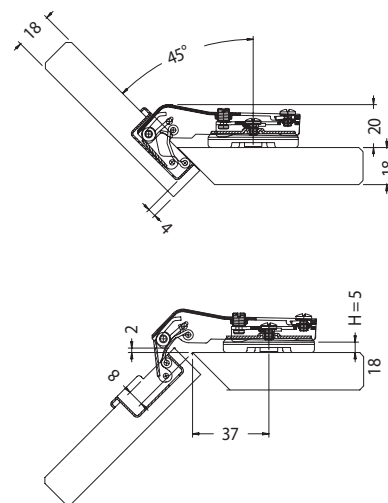
apertura 90° per angoli 45°

SELF CLOSING HINGES

opening 90° corners 45°

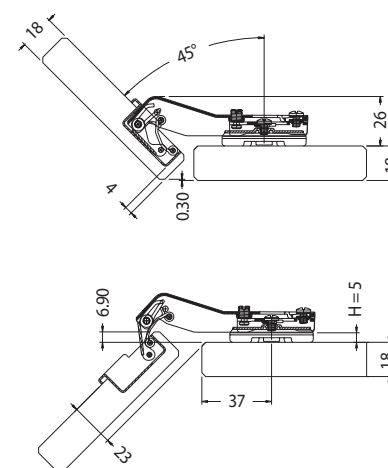
821 **P** 4 4

Braccetto in zama, collo (P) Piano.
Zamak, crank (P) Straight.



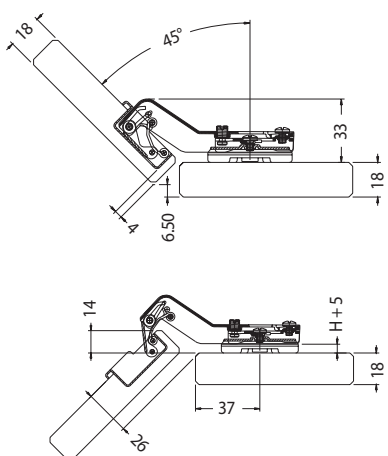
821 **M** 4 4

Braccetto in zama, collo (M) Medio.
Zamak, crank (M) Medium.



821 **C** 4 4

Braccetto in zama, collo (C) Collo alto.
Zamak, crank (C) Tall.

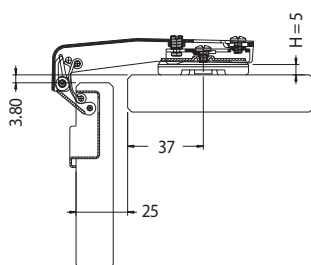
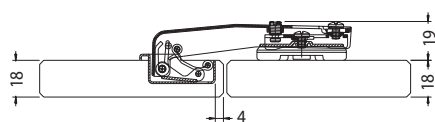


**CERNIERE A CHIUSURA
AUTOMATICA**
apertura 90°

**SELF CLOSING
HINGES**
opening 90°

822 ■ **L** **4** **4**

Per fissaggio su montante, foratura modulo 37x32 mm, tipo (L).
To fix on the blind corners, drill for modulus 37x32 mm, type (L).

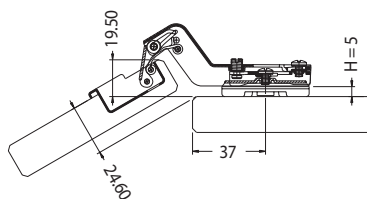
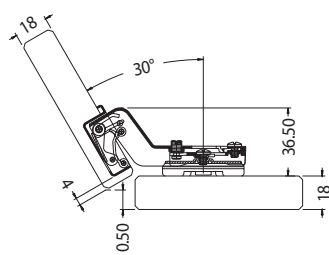


**CERNIERE A CHIUSURA
AUTOMATICA**
apertura 90° per angoli 30°

**SELF CLOSING
HINGES**
opening 90° corners 30°

823 ■ **C** **4** **4**

Braccetto in zama, collo (C) Collo alto.
Zamak, crank (C) Tall.



CERNIERE A CHIUSURA AUTOMATICA

apertura 165°

SELF CLOSING HINGES

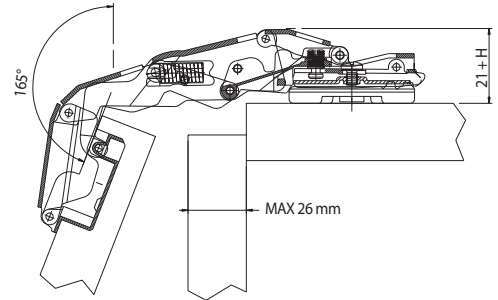
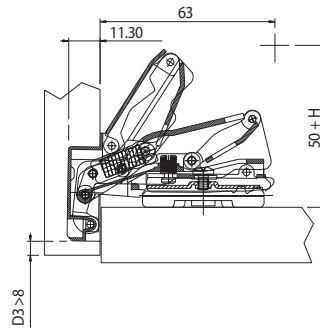
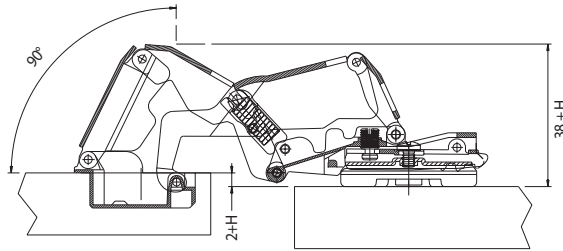
opening 165°

SPESORE BASETTA (H) THICKNESS OF MOUNTING PLATE (H)	FORO ANTA (D) DISTANCE IN THE DOOR (D)							
	3	4	5	6	7	8		
3	18	19	20	21	22	23		
4	17	18	19	20	21	22		
5	16	17	18	19	20	21		
6	15	16	17	18	19	20		
7	14	15	16	17	18	19		
8	13	14	15	16	17	18		
9	12	13	14	15	16	17		
10	11	12	13	14	15	16		

H = 18 + D - S

824 P 4 4

Braccetto in zama, collo (P) Piano.
Zamak, crank (P) Straight.

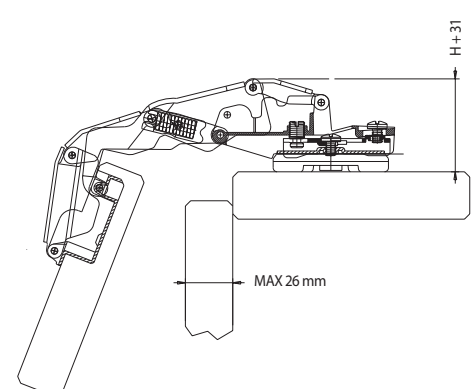
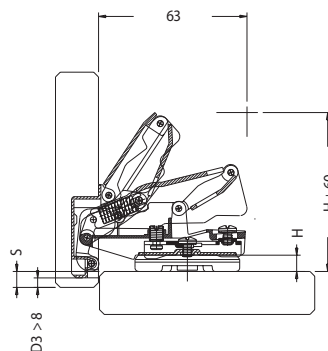
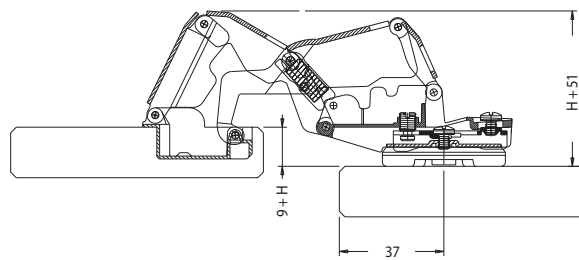
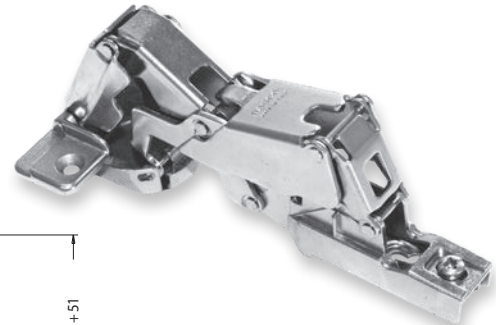


SPESORE BASETTA (H) THICKNESS OF MOUNTING PLATE (H)	FORO ANTA (D) DISTANCE IN THE DOOR (D)							
	3	4	5	6	7	8		
3	9	10	11	12	13	14		
4	8	9	10	11	12	13		
5	7	8	9	10	11	12		
6	6	7	8	9	10	11		
7	5	6	7	8	9	10		
8	4	5	6	7	8	9		
9	3	4	5	6	7	8		
10	2	3	4	5	6	7		

H = 9 + D - S

824 M 4 4

Braccetto in zama, collo (M) Medio.
Zamak, crank (M) Medium.



CERNIERE A CHIUSURA
AUTOMATICA
apertura 110°

SELF CLOSING
HINGES
opening 110°



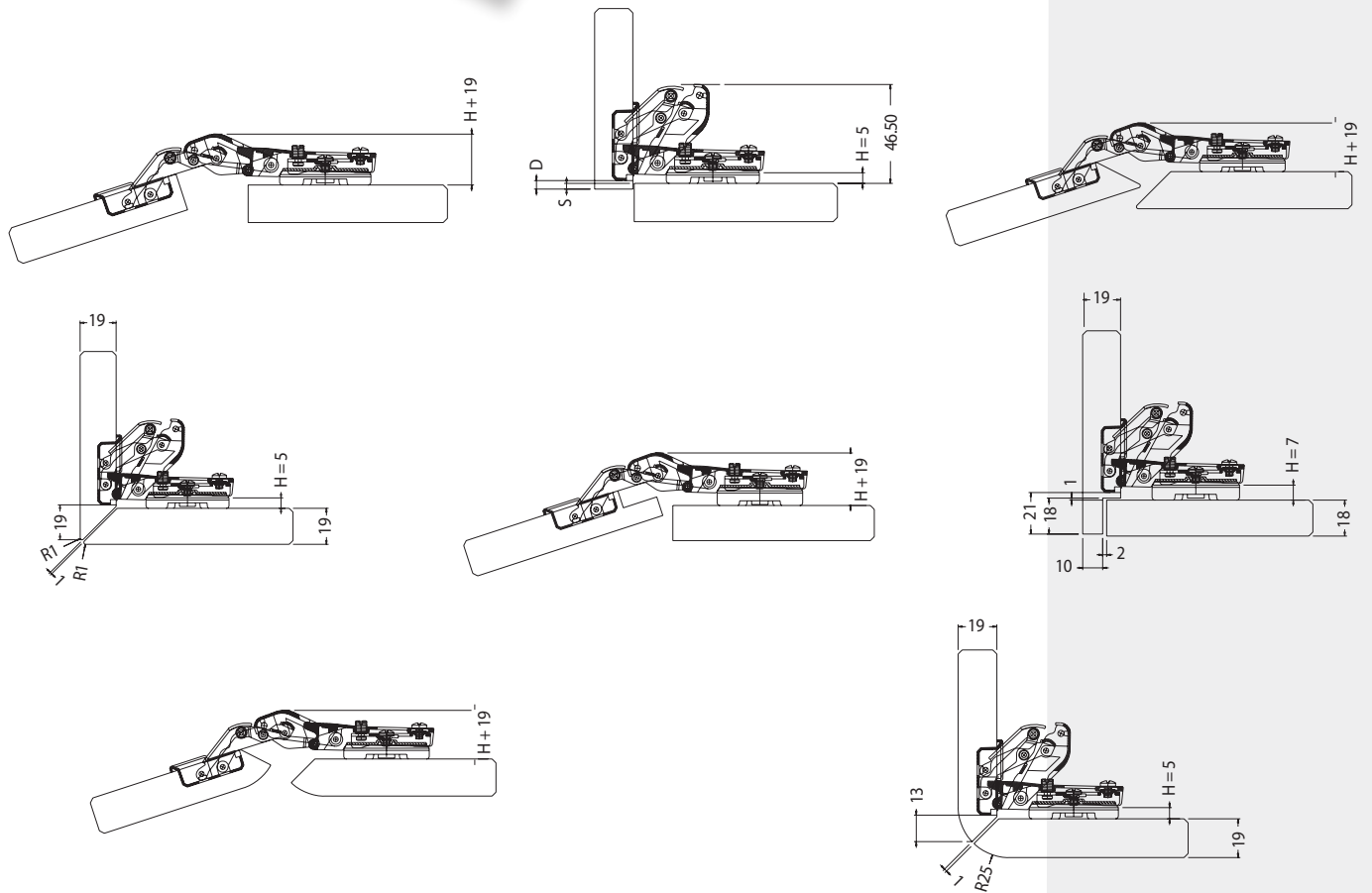
828 AN P 4 4

Braccetto in zama, collo (P) Piano.
Zamak, crank (P) Straight.



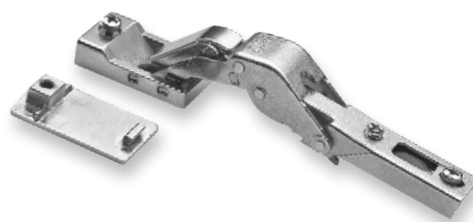
		FORO ANTA [D] DISTANCE IN THE DOOR [D]																
		3	4	5	6	7	8	9	10	11	12	13	14	15	16	17	18	19
SPESORE Basetta [H] THICKNESS OF MOUNTING PLATE [H]	3	4	5	6	7	8	9	10	11	12	13	14	15	16	17	18	19	
	4	3	4	5	6	7	8	9	10	11	12	13	14	15	16	17	18	
	5	2	3	4	5	6	7	8	9	10	11	12	13	14	15	16	17	
	6	1	2	3	4	5	6	7	8	9	10	11	12	13	14	15	16	
	7	0	1	2	3	4	5	6	7	8	9	10	11	12	13	14	15	
	8		0	1	2	3	4	5	6	7	8	9	10	11	12	13	14	
	9			0	1	2	3	4	5	6	7	8	9	10	11	12	13	
	10				0	1	2	3	4	5	6	7	8	9	10	11	12	

H = 4 + D - S



828 AA P 4 4

Braccetto in zama, collo (P) Piano, per cristallo.
Zamak, crank (P) Straight, for crystal.



CERNIERE A CHIUSURA AUTOMATICA

per mobili ad angolo

SELF CLOSING HINGES

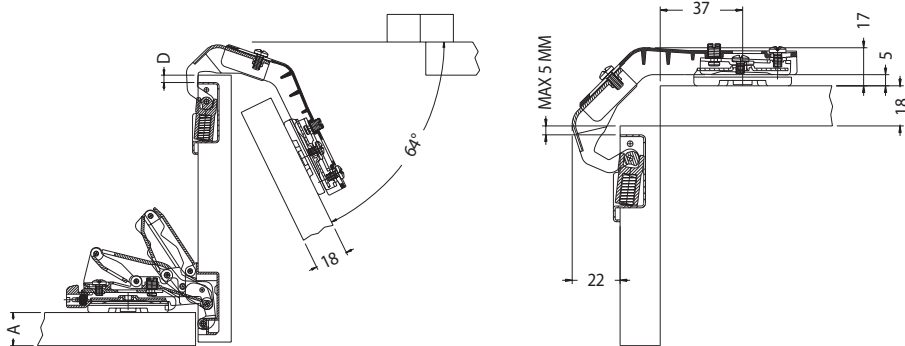
for corner cabinet

829 P 4 4

Braccetto in zama, collo (P) Piano.
Zamak, crank (P) Straight.

A = da 16 mm a 24 mm.
A = from 16 to 24 mm.

D = 4 mm - 5 mm max.
D = 4 mm - 5 mm max.



NOTE
NOTES



CASSE

CUPS



CASSE DISPONIBILI

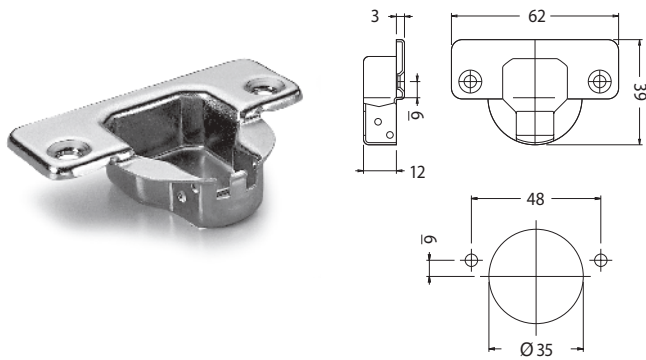
apertura 90° Ø 35

AVAILABLE CUPS

opening 90° Ø 35

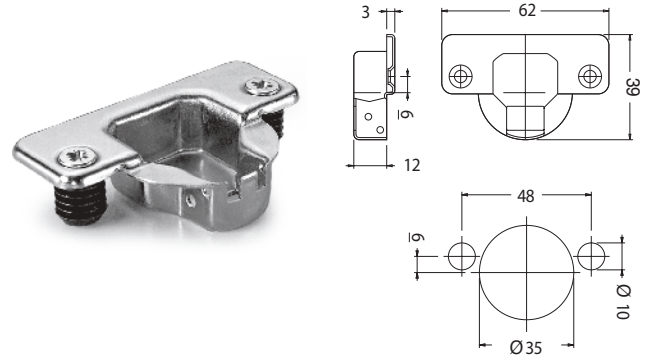
60

Cassa in acciaio; fissaggio a viti autofilettanti (escluse dalla fornitura).
Steel cup; self-cutting screws fastener (not included in supply).



61

Cassa in acciaio; fissaggio a pressione (bussole Ø 10 mm).
Steel cup; pressurized fastener (Ø 10 mm. dowels).



ALTRE CASSE DISPONIBILI

nella versione apertura 90°

OTHER AVAILABLE CUPS

for opening 90°

SERIE 780 - 90°

su richiesta / upon request

	45 x 9,5	48 x 6	52 x 5,5
VITI - Box h 12 mm SCREWS - Box h 12 mm	62	60	45
CODOLI - Box h 12 mm DOWELS - Box h 12 mm	63 [Ø8]	61 [Ø10]	46 [Ø10]
QUICK-FIX [Disegno A] QUICK-FIX [Drawing A]	51 [Ø8]	47 [Ø10]	-
FISSAGGIO A CAMMA SENZA UTENSILI [Disegno B] FIXING BY CAM WITHOUT TOOLS [Drawing B]	-	39 [Ø10]	-

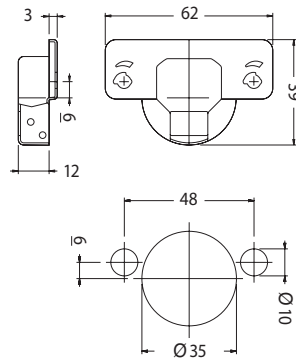
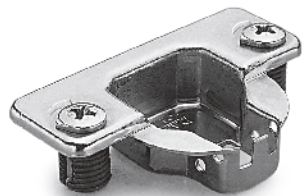
CASSE DISPONIBILI
 apertura 110° Ø 35

AVAILABLE CUPS
 opening 110° Ø 35

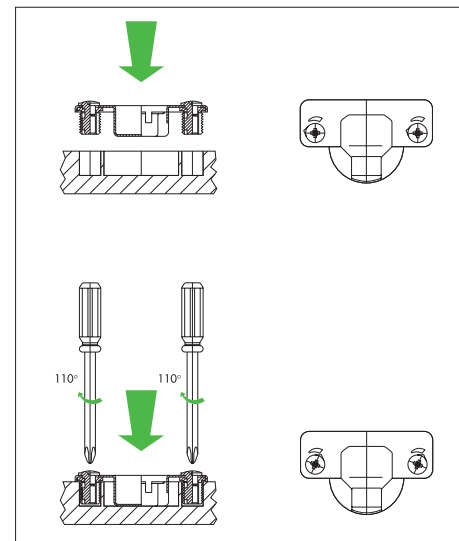


44

Cassa in acciaio; fissaggio a viti pressofuse a camma con bussole Ø 10 mm.
 Steel cup; Zamak screws by cam mounted with dowels Ø 10 mm.

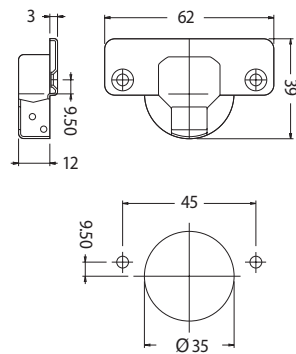
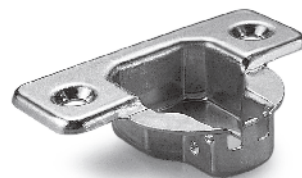


DISEGNO A DRAWING A



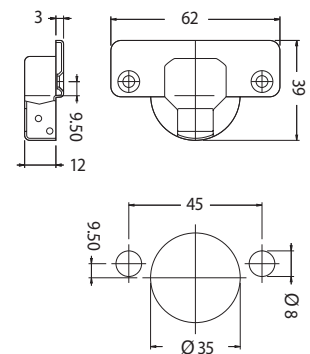
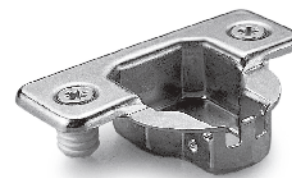
65

Cassa in acciaio; fissaggio a viti autofilettanti (escluse dalla fornitura).
 Steel cup; self-cutting screws fastener (not included in supply).



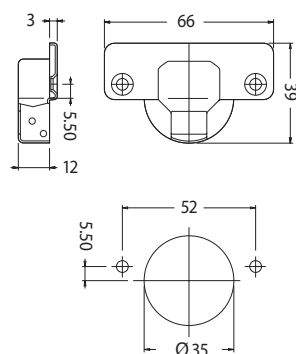
66

Cassa in acciaio; fissaggio a pressione (bussole Ø 8 mm).
 Steel cup; pressurized fastener (Ø 8 mm dowels).



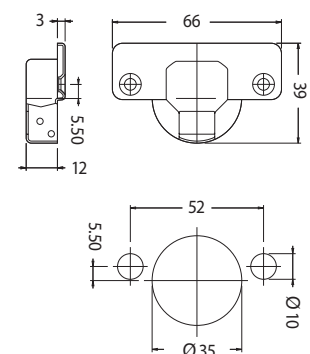
68

Cassa in acciaio; fissaggio a viti autofilettanti (escluse dalla fornitura).
 Steel cup; self-cutting screws fastener (not included in supply).



69

Cassa in acciaio; fissaggio a pressione (bussole Ø 10 mm).
 Steel cup; pressurized fastener (Ø 10 mm. dowels).

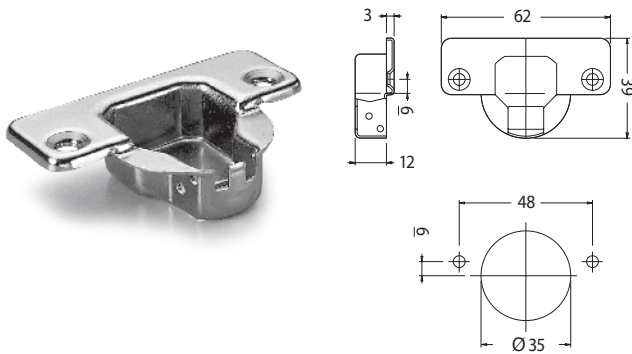


CASSE DISPONIBILI
apertura 110° Ø 35

AVAILABLE CUPS
opening 110° Ø 35

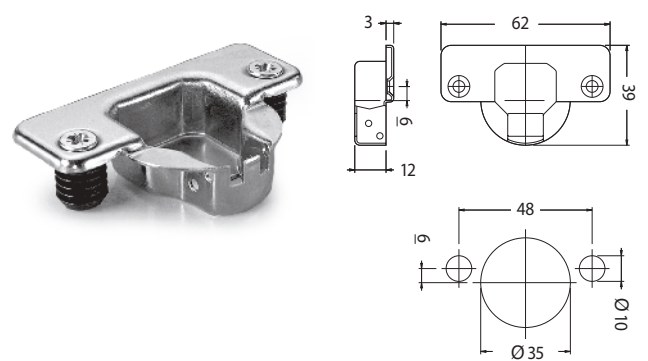
70

Cassa in acciaio; fissaggio a viti autofilettanti (escluse dalla fornitura).
Steel cup; self-cutting screws fastener (not included in supply).



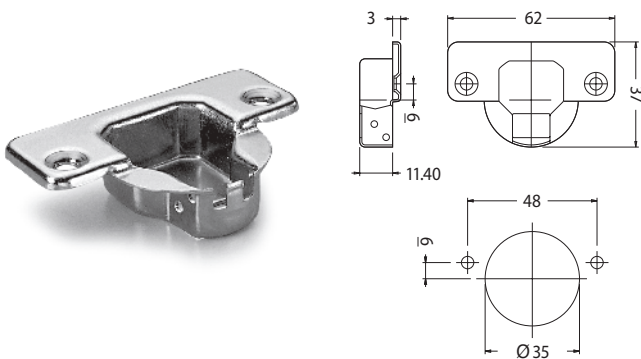
71

Cassa in acciaio; fissaggio a pressione (bussole Ø 10 mm).
Steel cup; pressurized fastener (Ø 10 mm. dowels).



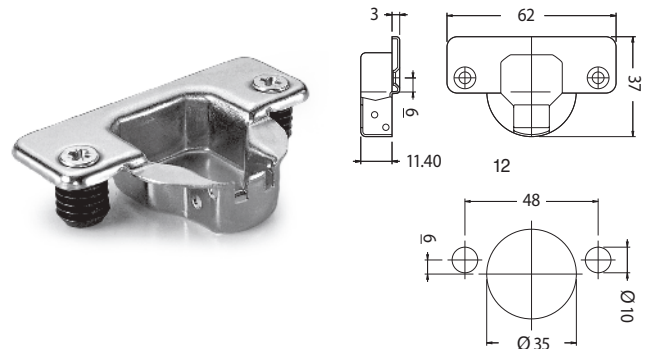
80

Cassa in acciaio; fissaggio a viti autofilettanti (escluse dalla fornitura).
Steel cup; self-cutting screws fastener (not included in supply).



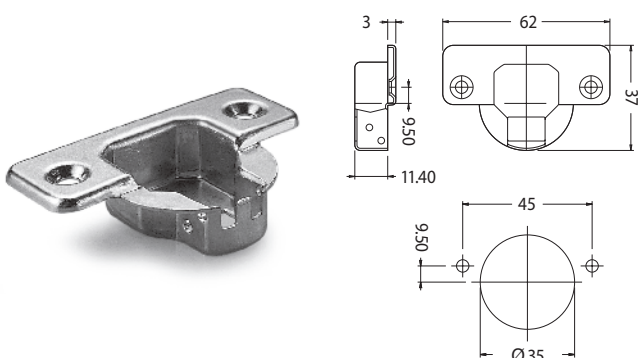
81

Cassa in acciaio; fissaggio a pressione (bussole Ø 10 mm).
Steel cup; pressurized fastener (Ø 10 mm dowels).



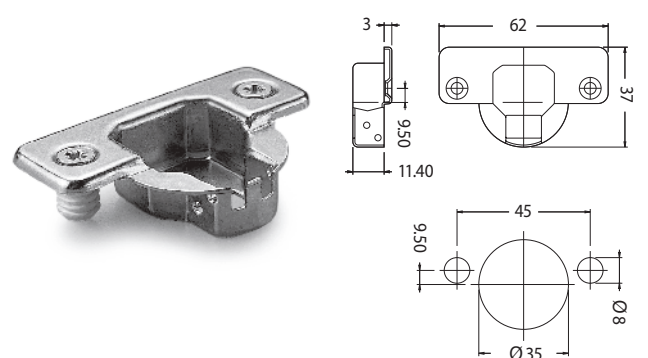
85

Cassa in acciaio; fissaggio a viti autofilettanti (escluse dalla fornitura).
Steel cup; self-cutting screws fastener (not included in supply).



86

Cassa in acciaio; fissaggio a pressione (bussole Ø 8 mm).
Steel cup; pressurized fastener (Ø 8 mm dowels).



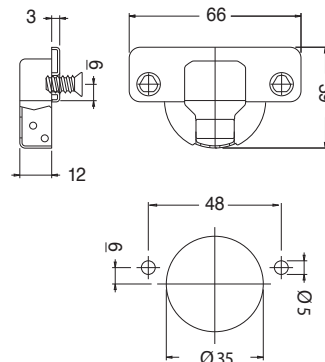
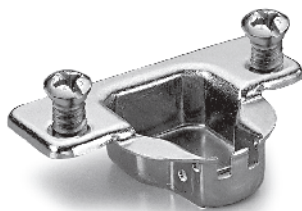
CASSE DISPONIBILI
apertura 110° Ø 35

AVAILABLE CUPS
opening 110° Ø 35



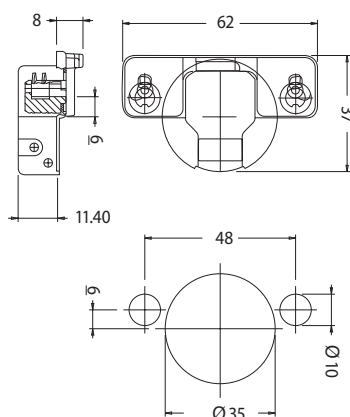
84

Cassa in acciaio; fissaggio a viti Euro.
Steel cup; Euro screws fastener.

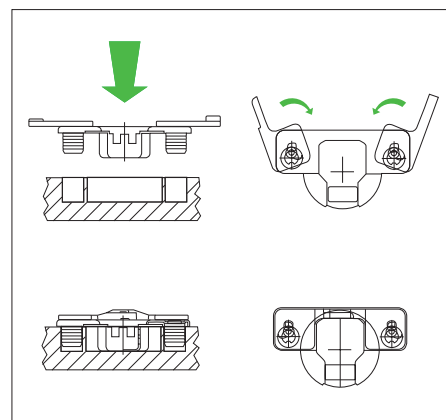


50

Cassa in acciaio; fissaggio a camma senza utensili.
Steel cup; fixing by cam screws without tools.

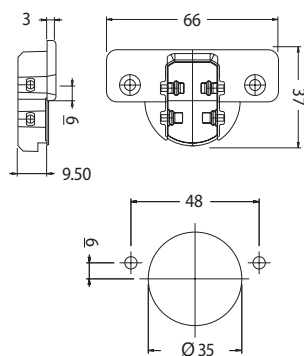


DISEGNO B DRAWING B



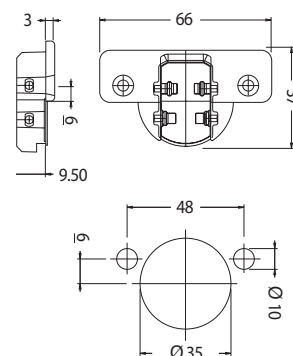
AN

Cassa in zama; fissaggio a viti autofilettanti (escluse dalla fornitura).
Zamak cup; self-cutting screws fastener (not included in supply).



AP

Cassa in zama; fissaggio a pressione (bussole Ø 10 mm).
Zamak cup; pressurized fastener (Ø 10 mm dowels).



Cassa abbinabile per la cerniera
Matching cup for hinge

828

Cassa abbinabile per la cerniera
Matching cup for hinge

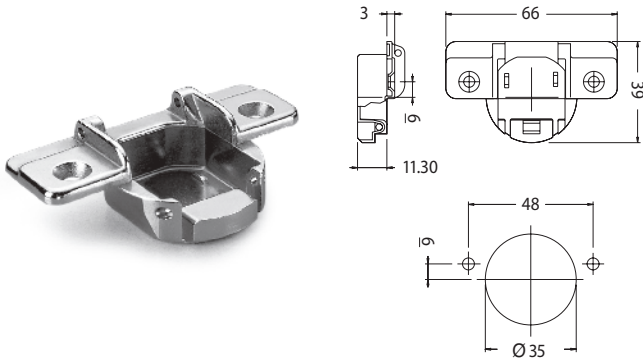
828

CASSE DISPONIBILI
 apertura 165° Ø 35

AVAILABLE CUPS
 opening 165° Ø 35

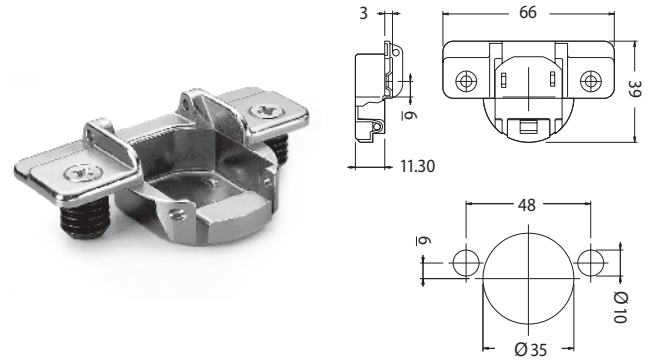
01

Cassa in zama; fissaggio a viti autofilettanti (escluse dalla fornitura).
 Zamak cup; self-cutting screws fastener (not included in supply).



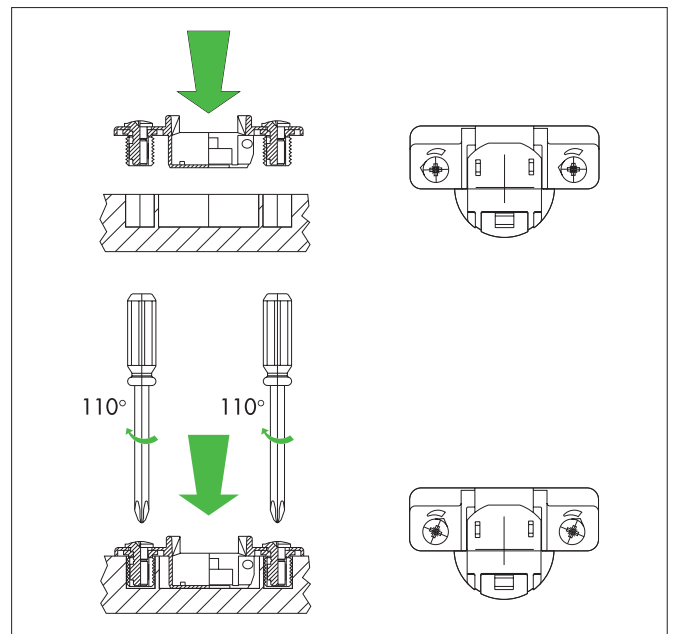
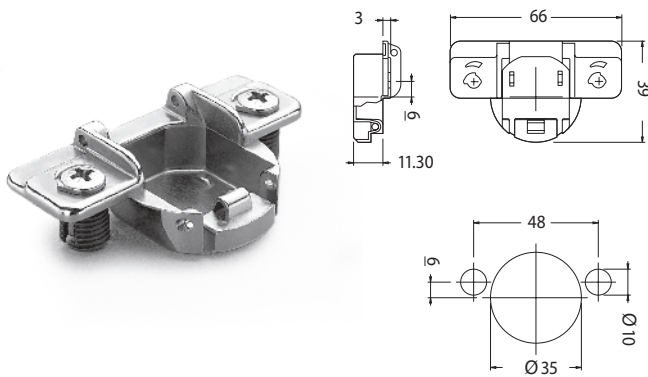
03

Cassa in zama; fissaggio a pressione (bussole Ø 10 mm).
 Zamak cup; pressurized fastener (Ø 10 mm dowels).



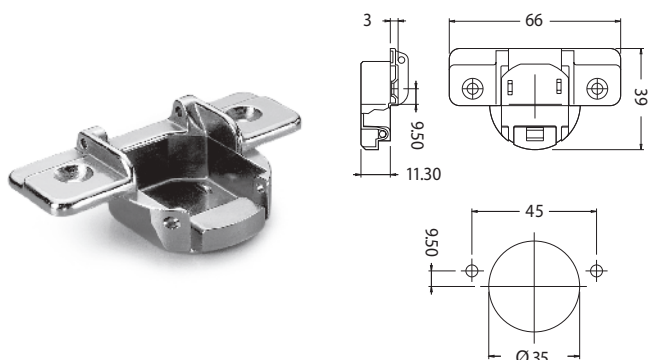
02

Cassa in zama; fissaggio a viti pressofuse a camma con bussole Ø 10 mm.
 Zamak cup; Zamak screws by cam mounted with dowels Ø 10 mm.



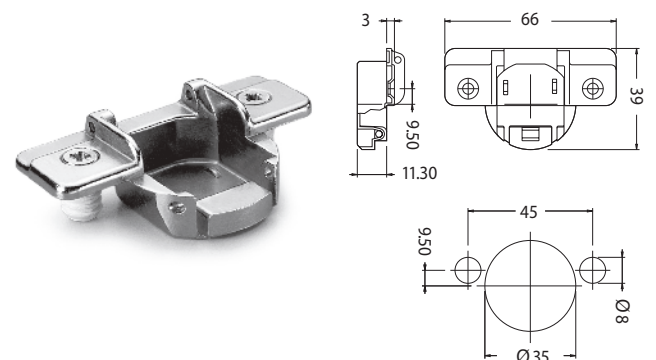
04

Cassa in zama; fissaggio a viti autofilettanti (escluse dalla fornitura).
 Zamak cup; self-cutting screws fastener (not included in supply).



05

Cassa in zama; fissaggio a pressione (bussole Ø 8 mm).
 Zamak cup; pressurized fastener (Ø 8 mm dowels).



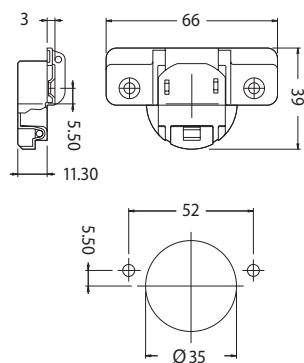
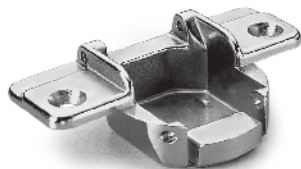
CASSE DISPONIBILI
apertura 165° Ø 35

AVAILABLE CUPS
opening 165° Ø 35



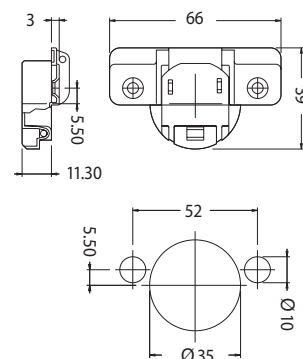
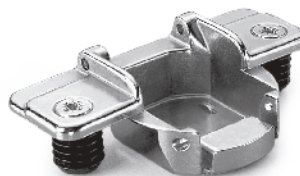
06

Cassa in zama; fissaggio a viti autofilettanti
(escluse dalla fornitura).
Zamak cup; self-cutting screws fastener (not included in supply).

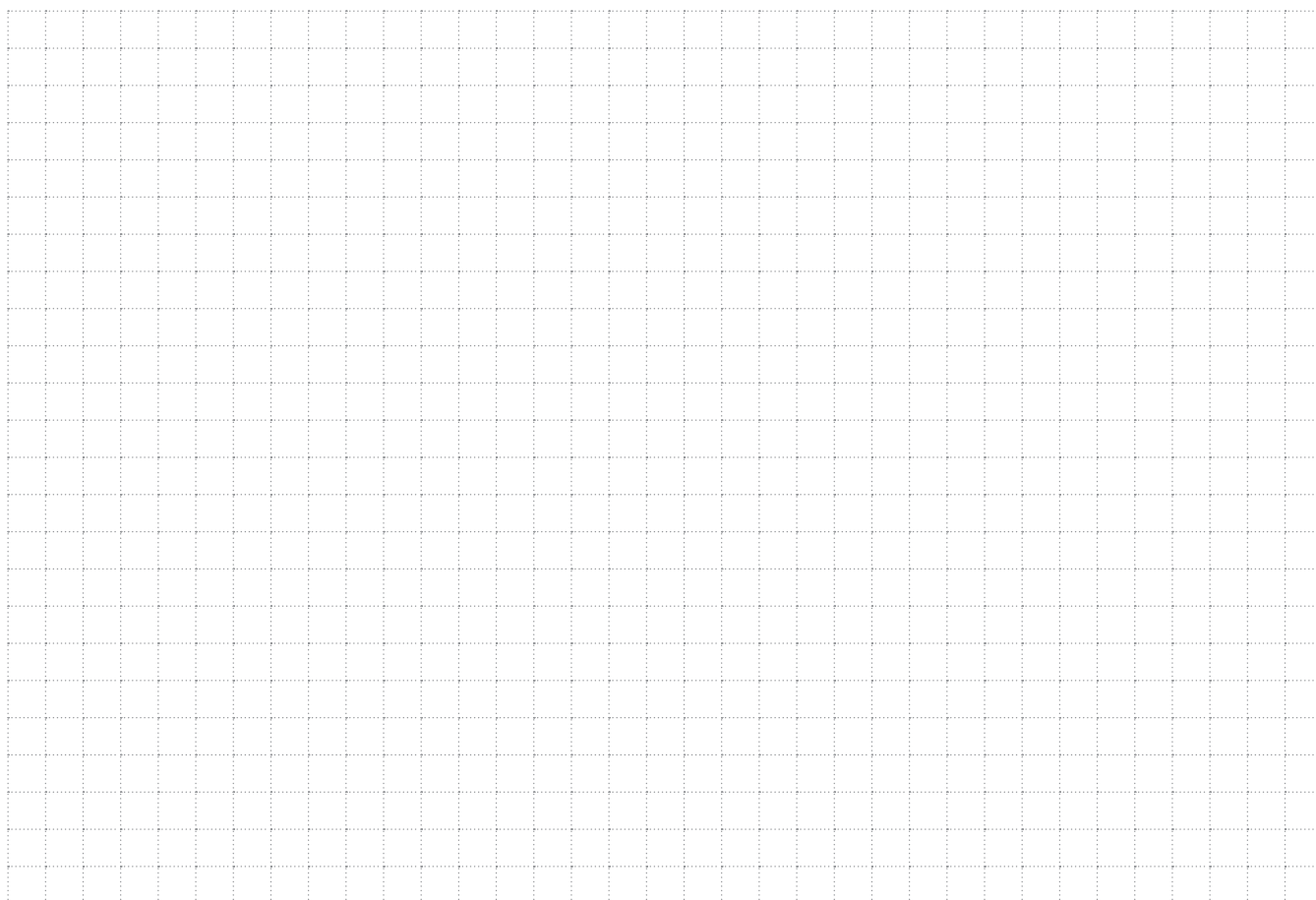


07

Cassa in zama; fissaggio a pressione (bussole Ø 10 mm).
Zamak cup; pressurized fastener (Ø 10 mm dowels).



NOTE
NOTES



CASSE DISPONIBILI
per mobili ad angolo $\varnothing 35$

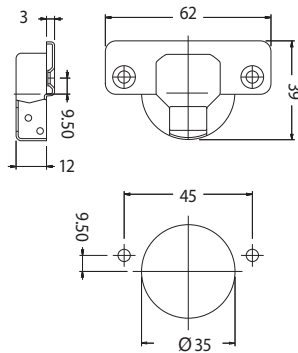
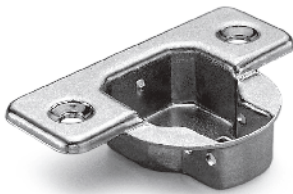
AVAILABLE CUPS
for corner cabinets $\varnothing 35$

Casse abbinabili per la cerniera
Matching cups for hinge

829 **P** **4** **4**

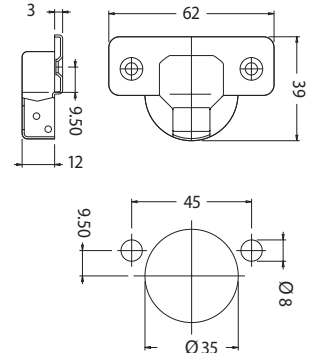
82

Cassa in acciaio; fissaggio a viti autofilettanti
(escluse dalla fornitura).
Steel cup; self-cutting screws fastener (not included in supply).



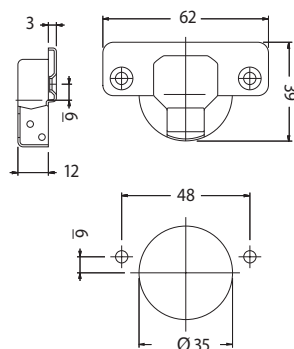
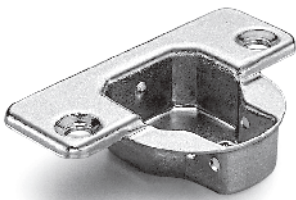
83

Cassa in acciaio; fissaggio a pressione (bussole $\varnothing 8$ mm).
Steel cup; pressurized fastener ($\varnothing 8$ mm dowels).



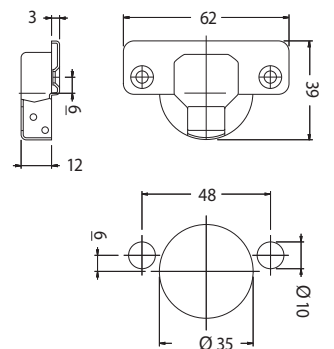
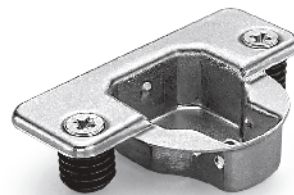
87

Cassa in acciaio; fissaggio a viti autofilettanti
(escluse dalla fornitura).
Steel cup; self-cutting screws fastener (not included in supply).



88

Cassa in acciaio; fissaggio a pressione (bussole $\varnothing 10$ mm).
Steel cup; pressurized fastener ($\varnothing 10$ mm dowels).



BASETTE

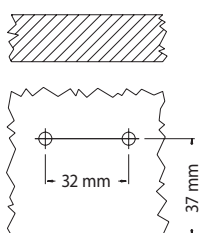
MOUNTING PLATES



B 997 AR V spessore mm **4 5 7**
thickness mm

Basetta in acciaio reversibile; regolazione verticale; interasse 32 mm; modulo 37.

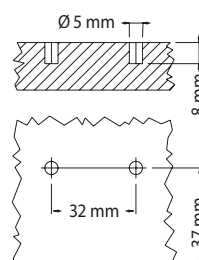
Steel reversible mounting plate; vertical adjustment; wheelbase 32 mm; modulus 37.



B 997 ER V spessore mm **4 5 7**
thickness mm

Basetta in acciaio reversibile; fissaggio a viti Euro (escluse dalla fornitura); regolazione verticale; interasse 32 mm; modulo 37.

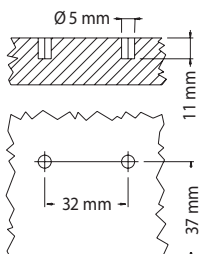
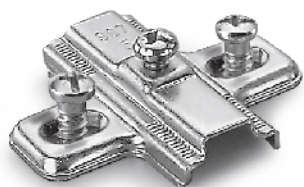
Steel reversible mounting plate; Euro screws fastener (not included in supply); vertical adjustment; wheelbase 32 mm; modulus 37.



B 997 ER L V spessore mm **4 5 7**
thickness mm

Basetta in acciaio reversibile; fissaggio a viti Euro 6,3x14; regolazione verticale; interasse 32 mm; modulo 37.

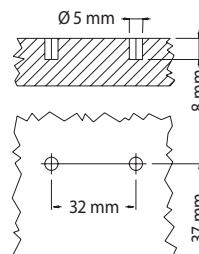
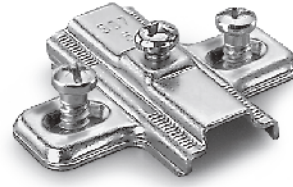
Steel reversible mounting plate; Euro screws fastener 6,3x14; vertical adjustment; wheelbase 32 mm; modulus 37.



B 997 ER C V spessore mm **4 5 7**
thickness mm

Basetta in acciaio reversibile; fissaggio a viti Euro 6,3x10,5; regolazione verticale; interasse 32 mm; modulo 37.

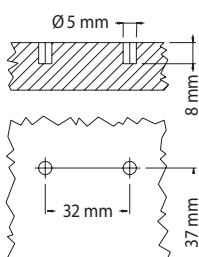
Steel reversible mounting plate; Euro screws fastener 6,3x10,5; vertical adjustment; wheelbase 32 mm; modulus 37.



B 997 P5 I V spessore mm **4 5 7**
thickness mm

Basetta in acciaio reversibile; fissaggio a bussole $\varnothing 5$ mm; regolazione verticale; interasse 32 mm; modulo 37.

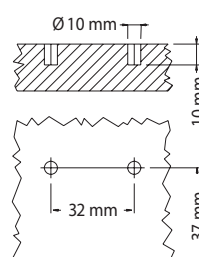
Steel reversible mounting plate; $\varnothing 5$ mm dowels fastener; vertical adjustment; wheelbase 32 mm; modulus 37.



B 997 P10 V spessore mm **4 5 7**
thickness mm

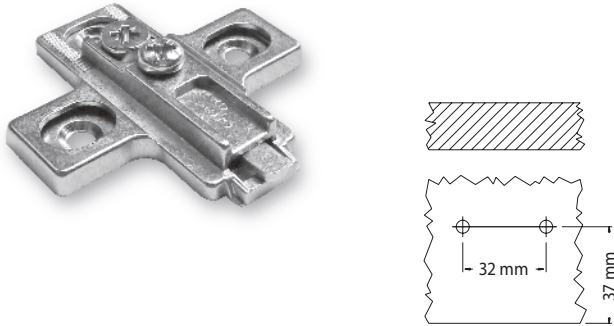
Basetta in acciaio reversibile; fissaggio a pressione (bussole $\varnothing 10$ mm); regolazione verticale; interasse 32 mm; modulo 37.

Steel reversible mounting plate; pressurized fastener ($\varnothing 10$ mm dowels); vertical adjustment; wheelbase 32 mm; modulus 37.



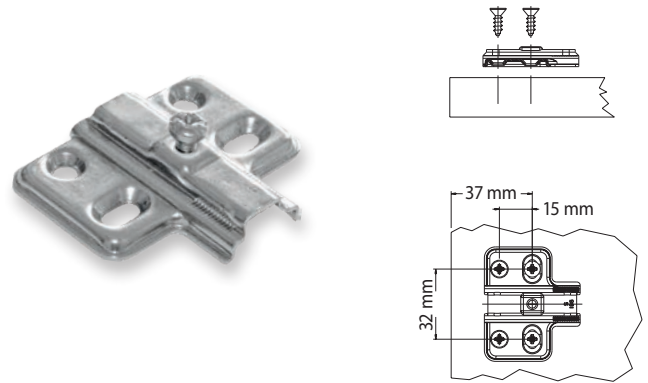
B 988 AR V spessore mm **3 5**
thickness mm

Basetta in zama; regolazione verticale mediante camma;
interasse 32 mm; modulo 37.
Zamak mounting plate; vertical adjustment by cam;
wheelbase 32 mm; modulus 37.



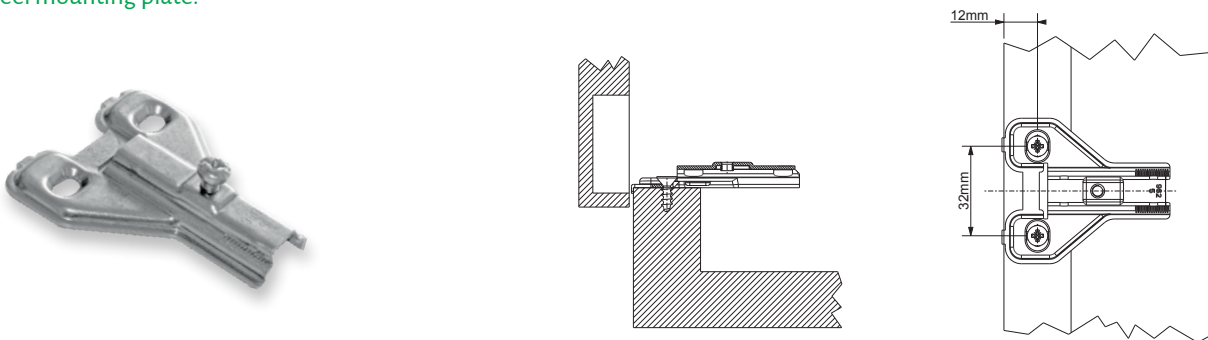
B 961 AR V spessore mm **5**
thickness mm

Basetta in acciaio.
Steel mounting plate.



B 962 AR V spessore mm **5**
thickness mm

Basetta in acciaio.
Steel mounting plate.



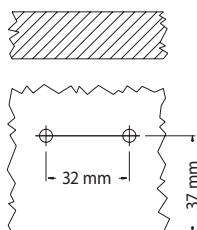
NOTE
NOTES

A large grid area for notes, consisting of a grid of small squares.

B 893 AR V spessore mm **3 5 6,5 8 10**
thickness mm

Basetta in zama reversibile; regolazione verticale; interasse 32 mm; modulo 37.

Zamak reversible mounting plate; vertical adjustment; wheelbase 32 mm; modulus 37.

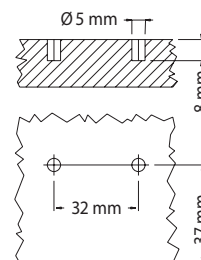
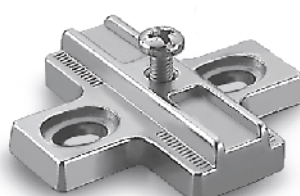


ORDINE MINIMO 5.000 PEZZI - MIN. ORDER QUANTITY 5.000

B 893 ER V spessore mm **3 5 6,5 8 10**
thickness mm

Basetta in zama reversibile; fissaggio a viti Euro (escluse dalla fornitura); regolazione verticale; interasse 32 mm; modulo 37.

Zamak reversible mounting plate; Euro screws fastener (not included in supply); vertical adjustment; wheelbase 32 mm; modulus 37.

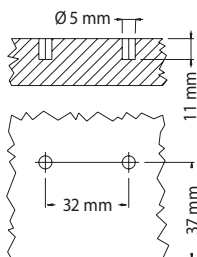
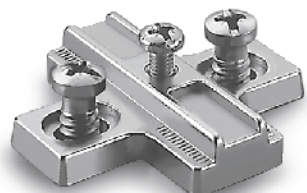


ORDINE MINIMO 5.000 PEZZI - MIN. ORDER QUANTITY 5.000

B 893 ER L V spessore mm **3 5 6,5 8 10**
thickness mm

Basetta in zama reversibile; fissaggio a viti Euro 6,3x14; regolazione verticale; interasse 32 mm; modulo 37.

Zamak reversible mounting plate; Euro screws fastener 6,3x14; vertical adjustment; wheelbase 32 mm; modulus 37.

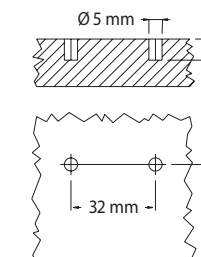
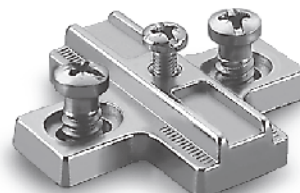


ORDINE MINIMO 5.000 PEZZI - MIN. ORDER QUANTITY 5.000

B 893 ER C V spessore mm **3 5 6,5 8 10**
thickness mm

Basetta in zama reversibile; fissaggio a viti Euro 6,3x10,5; regolazione verticale; interasse 32 mm; modulo 37.

Zamak reversible mounting plate; Euro screws fastener 6,3x10,5; vertical adjustment; wheelbase 32 mm; modulus 37.

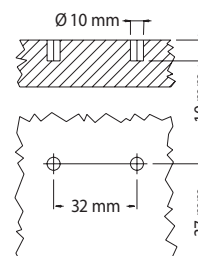
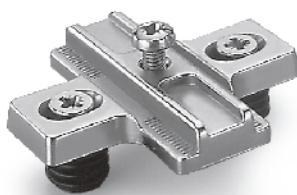


ORDINE MINIMO 5.000 PEZZI - MIN. ORDER QUANTITY 5.000

B 893 P10 V spessore mm **3 5 6,5 8 10**
thickness mm

Basetta in zama reversibile; fissaggio a pressione (bussole $\varnothing 10$ mm); regolazione verticale; interasse 32 mm; modulo 37.

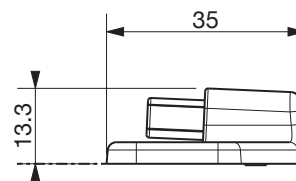
Zamak reversible mounting plate; pressurized fastener ($\varnothing 10$ mm dowels); vertical adjustment; wheelbase 32 mm; modulus 37.



ORDINE MINIMO 5.000 PEZZI - MIN. ORDER QUANTITY 5.000

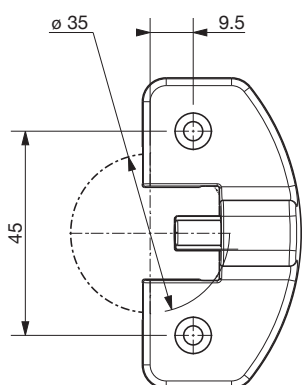
F412

Ammortizzatore in zama universale.
Universal zamak soft close.

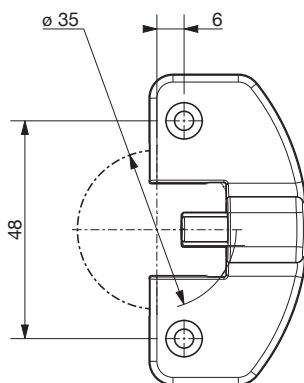


DISPONIBILE IN TRE MODELLI, CON TRE DIFFERENTI INTERASSI
AVAILABLE IN THREE MODELS, WITH THREE DIFFERENT HOLES SPACING

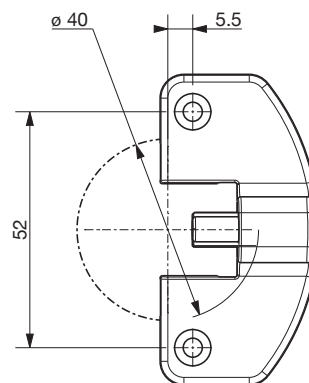
F412-45



F412-48



F412-52

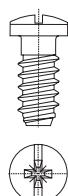


VITI EURO DISPONIBILI

AVAILABLE EURO SCREWS

T 008

Vite Euro \varnothing 6,3 x 14.
Euro screw \varnothing 6,3 x 14.



T 009

Vite Euro \varnothing 6,3 x 10,5.
Euro screw \varnothing 6,3 x 10,5.






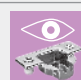

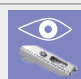





ESEMPIO D'ORDINE

EXAMPLE OF ORDER





Le immagini utilizzate in questo esempio d'ordine sono indicative e potrebbero non corrispondere a quelle del presente catalogo.

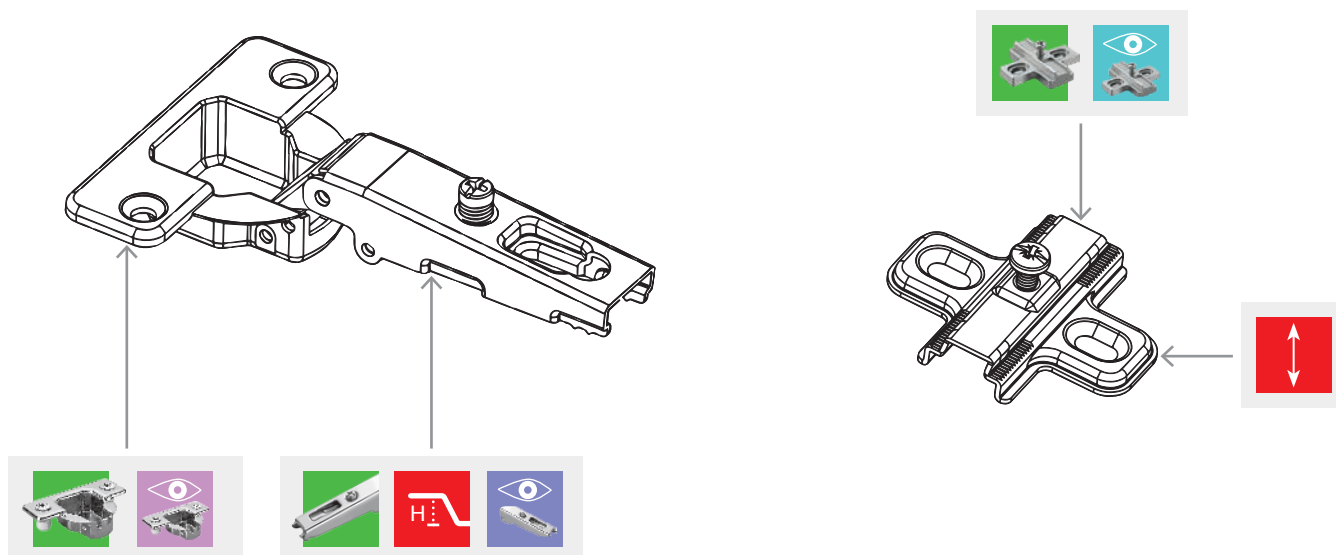
The images used in this example are indicative and may not correspond to those in this catalog.

	serie serie		spessore basetta in mm mounting plate thickness in mm
	cassa cup		altezza braccetto crank height
	braccetto arm		finitura cassa cup finishing
	basetta mounting plate		finitura braccetto arm finishing
	numero riferimento cassa reference cup number		finitura basetta mounting plate finishing

	P Collo Piano Straight Crank mm 0	C Collo Alto Tall Crank mm 17
	M Collo Medio Medium Crank mm 8	A Super Collo Supercrank mm 22

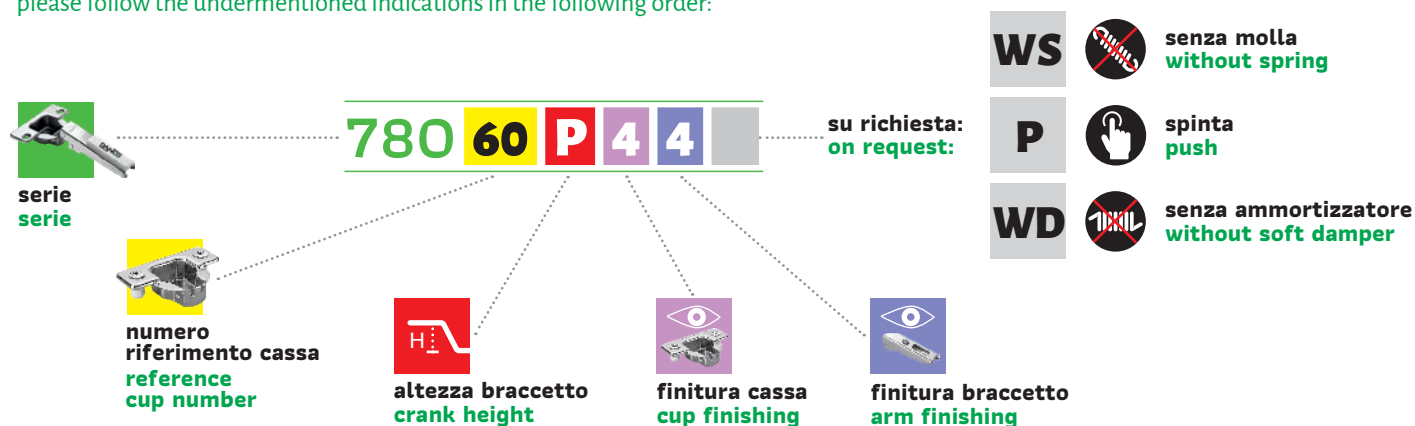
FINITURA FINISHING				4	9
				4 Nichelato Nickel plated	9 Zincato Galvanized
				4	9

	vite inserita inserted screw		senza molla without spring		spinta push		senza ammortizzatore without soft damper
---	-------------------------------------	---	-----------------------------------	---	--------------------	---	---



Per una corretta ordinazione ed un'esatta determinazione del codice seguire le sottoindicate modalità, con la seguente successione:

For a proper order and an exact interpretation of the code, please follow the undermentioned indications in the following order:



ESEMPIO DI ORDINE CERNIERE - ORDERING EXAMPLE OF HINGES

	codice serie serie code	→	780
	numero riferimento cassa reference cup number	→	60
	altezza braccetto crank height	→	P
	finitura cassa cup finishing	→	4
	finitura braccetto arm finishing	→	4
	senza molla without spring	→	WS
	spinta push	→	P
	senza ammortizzatore without soft damper	→	WD

Ordinare il seguente codice:
Order the following code:

780 60 P 4 4

Si avrà quindi una cerniera con cassa e braccetto in acciaio nichelato, collo piano.
You will therefore have a hinge with steel, nickel plated cup and arm, straight crank.

ESEMPIO DI ORDINE Basette - ORDERING EXAMPLE OF MOUNTING PLATES

	codice basetta mounting plate code	→	B 997 AR V
	spessore thickness	→	5
	finitura basetta mounting plate finishing	→	4
	vite inserita inserted screw	→	V

Ordinare il seguente codice:
Order the following code:

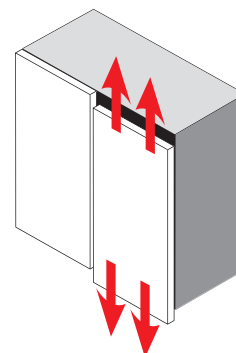
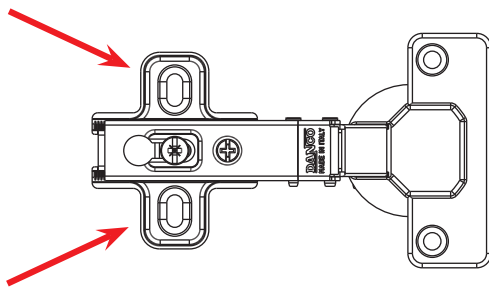
B 997 AR V 5 4

Si avrà quindi una basetta B 997 AR V con spessore 5 mm, nichelato.
You will therefore have a mounting plate code B 997 AR V, 5 mm thickness, nickel plated.

SISTEMI DI REGOLAZIONE

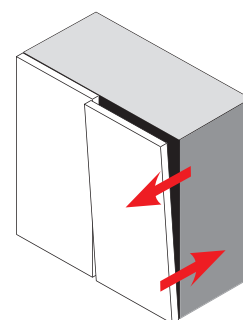
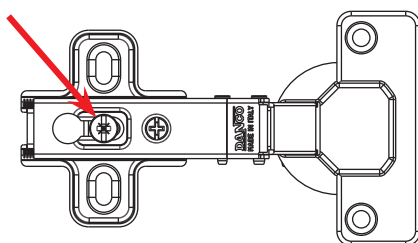
ADJUSTMENT SYSTEMS

REGOLAZIONE VERTICALE VERTICAL ADJUSTMENT



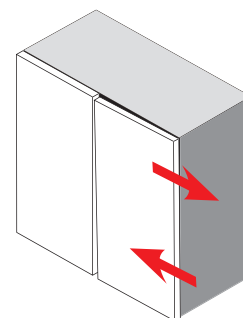
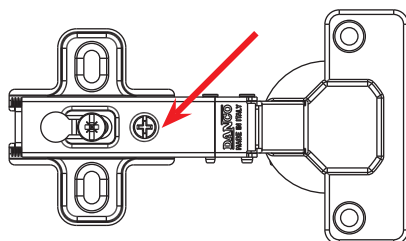
+/- 2 mm

REGOLAZIONE FRONTALE TRAMITE VITE FRONTAL ADJUSTMENT BY SCREW



- 0/+5 mm

REGOLAZIONE LATERALE DI COPERTURA LATERAL OVERLAY ADJUSTMENT



-1/+5 mm

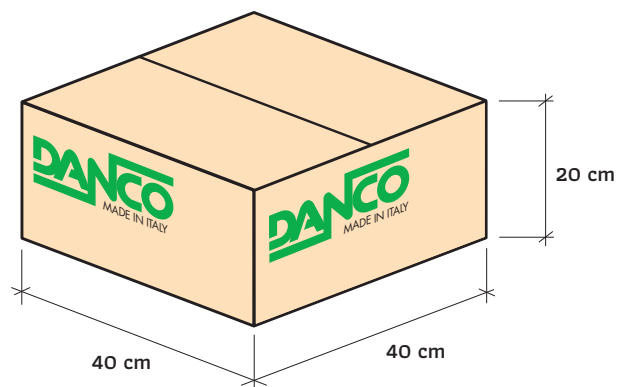
IMBALLO

PACKING

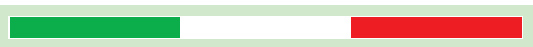
CONTENUTO CONTENTS

Scatolone Big box

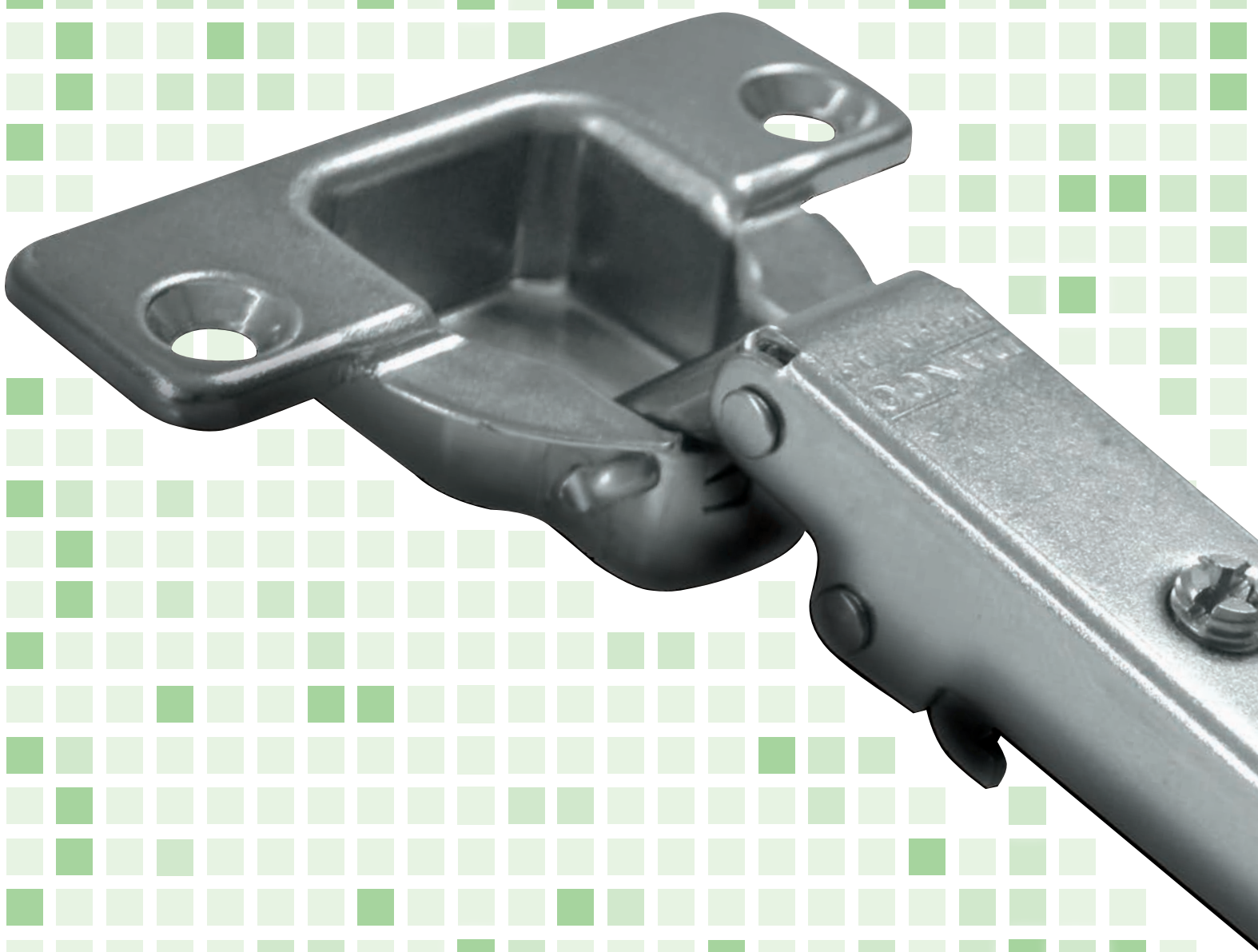
SERIE 780	300
SERIE 821 - 822 - 823 - 826 - 829	200
SERIE 828	200
SERIE 824	100



Dal 1956 i nostri prodotti hanno un'anima
tutta **italiana**.



Since 1956 our products have
an all-**italian** soul.



www.danco.it



DANCO spa

20837 VEDUGGIO (MB) - via Volta, 12

Tel. +39 - 0362 998752 r.a.

Fax +39 - 0362 998730 / +39 - 0362 998078

danco@danco.it

www.danco.it